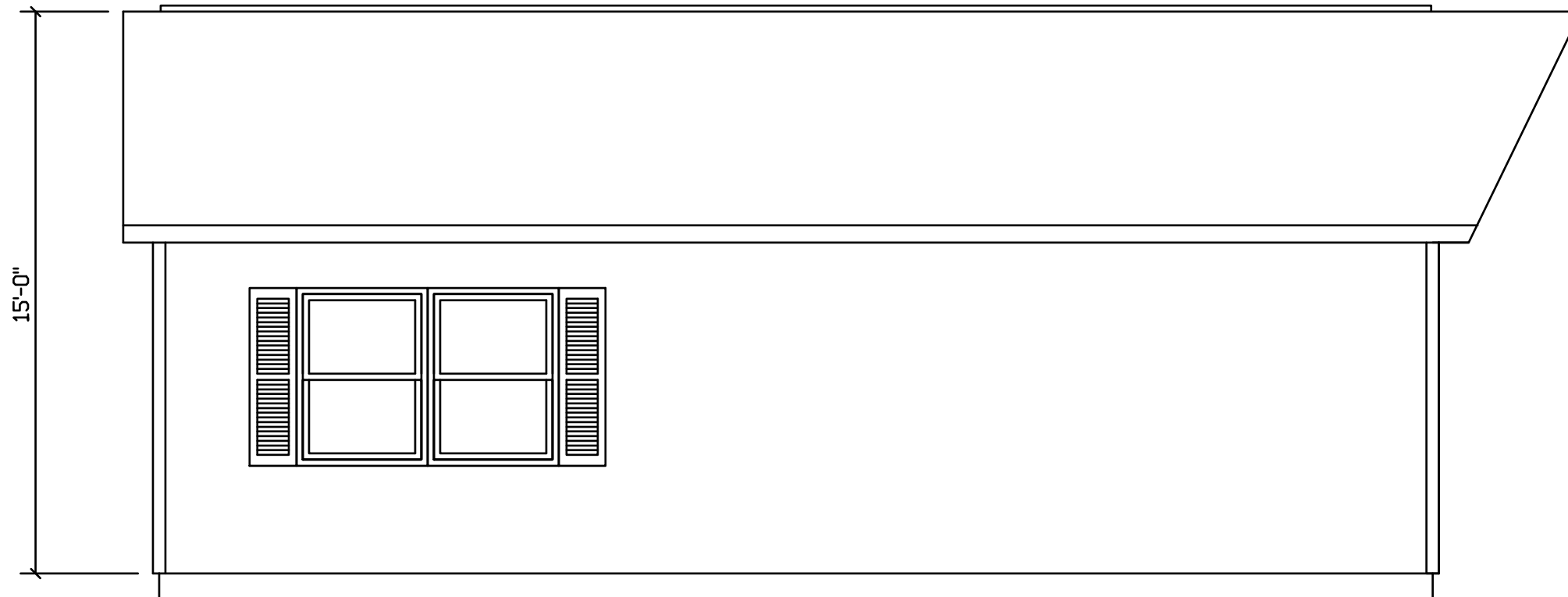


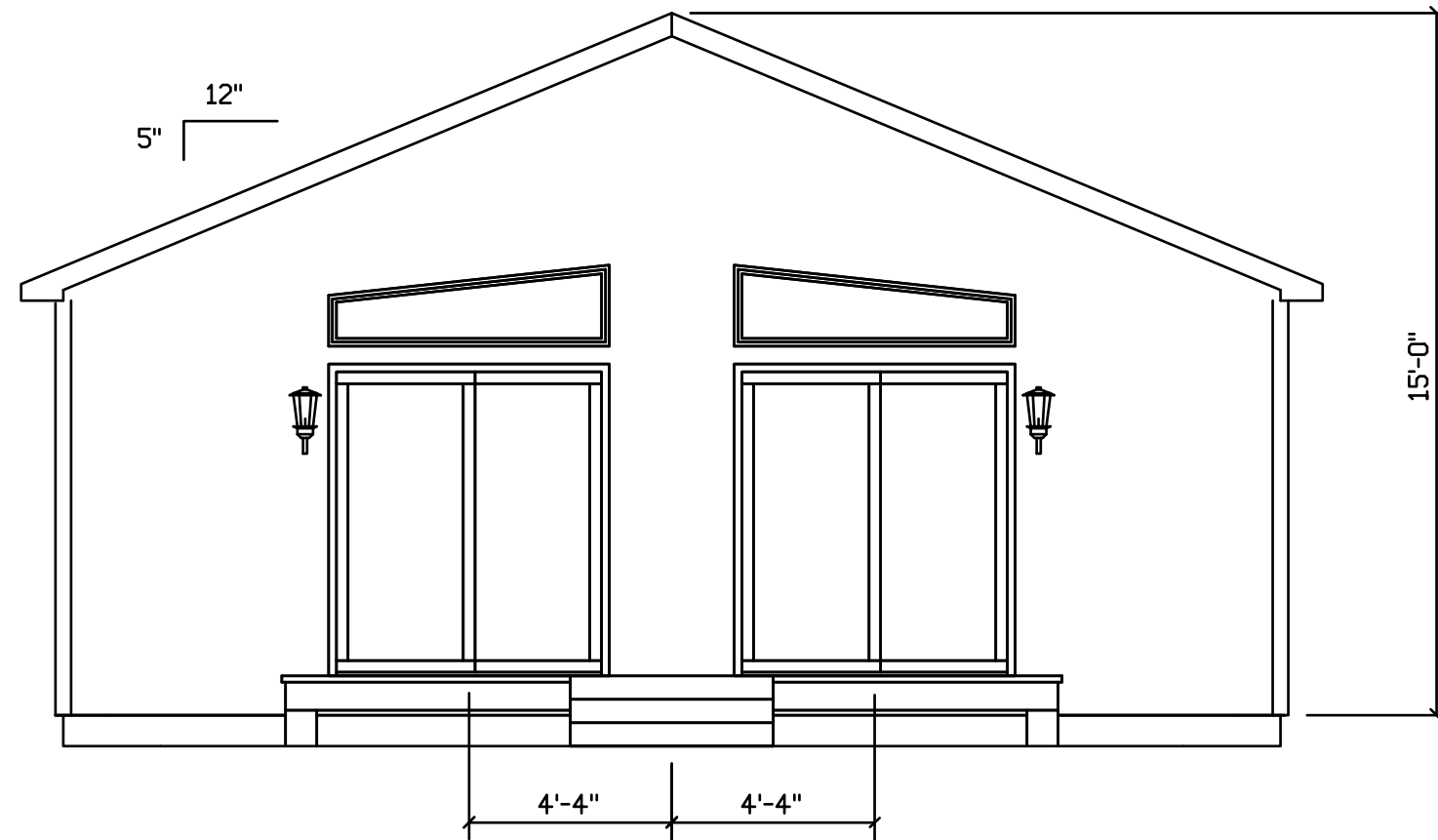
SKYVIEW #226

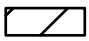


 HOLD BACK GYPBD 1'-0" PER
SIDE IN OPEN AREAS

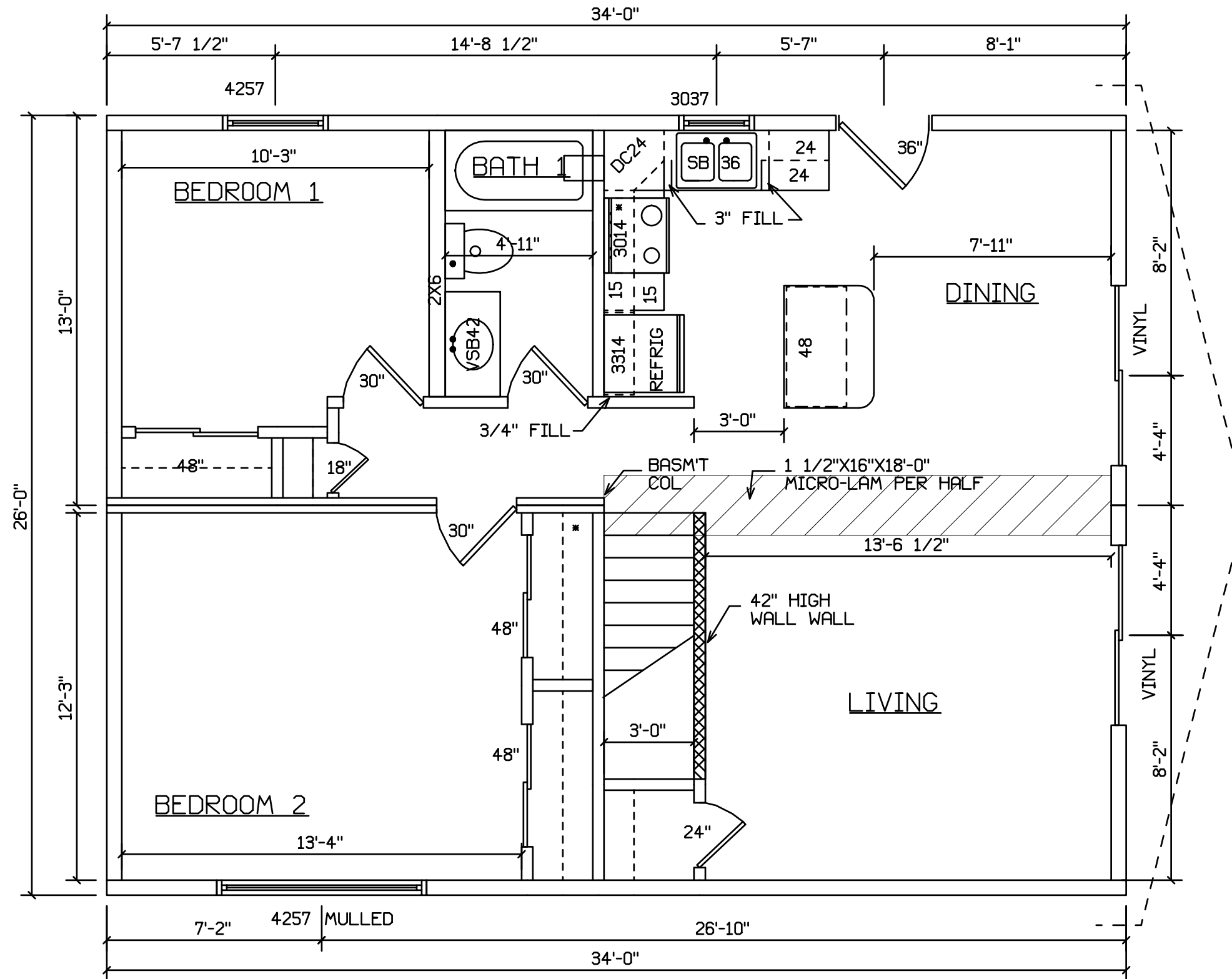
STAIRS DESIGNED TO 8 1/4" RISE
MAX., AND 9" TREAD MIN W/ 1 1/8" NOSING

SKYVIEW #226



 HOLD BACK GYPBD 1'-0" PER
SIDE IN OPEN AREAS
STAIRS DESIGNED TO 8 1/4" RISE
MAX., AND 9" TREAD MIN W/ 1 1/8" NOSING

TRAP GLASS ABOVE SGD AND PROW STANDARD



 HOLD BACK GYPBD 1'-0" PER SIDE IN OPEN AREAS

STAIRS DESIGNED TO 8 1/4" RISE MAX., AND 9" TREAD MIN W/ 1 1/8" NOSING