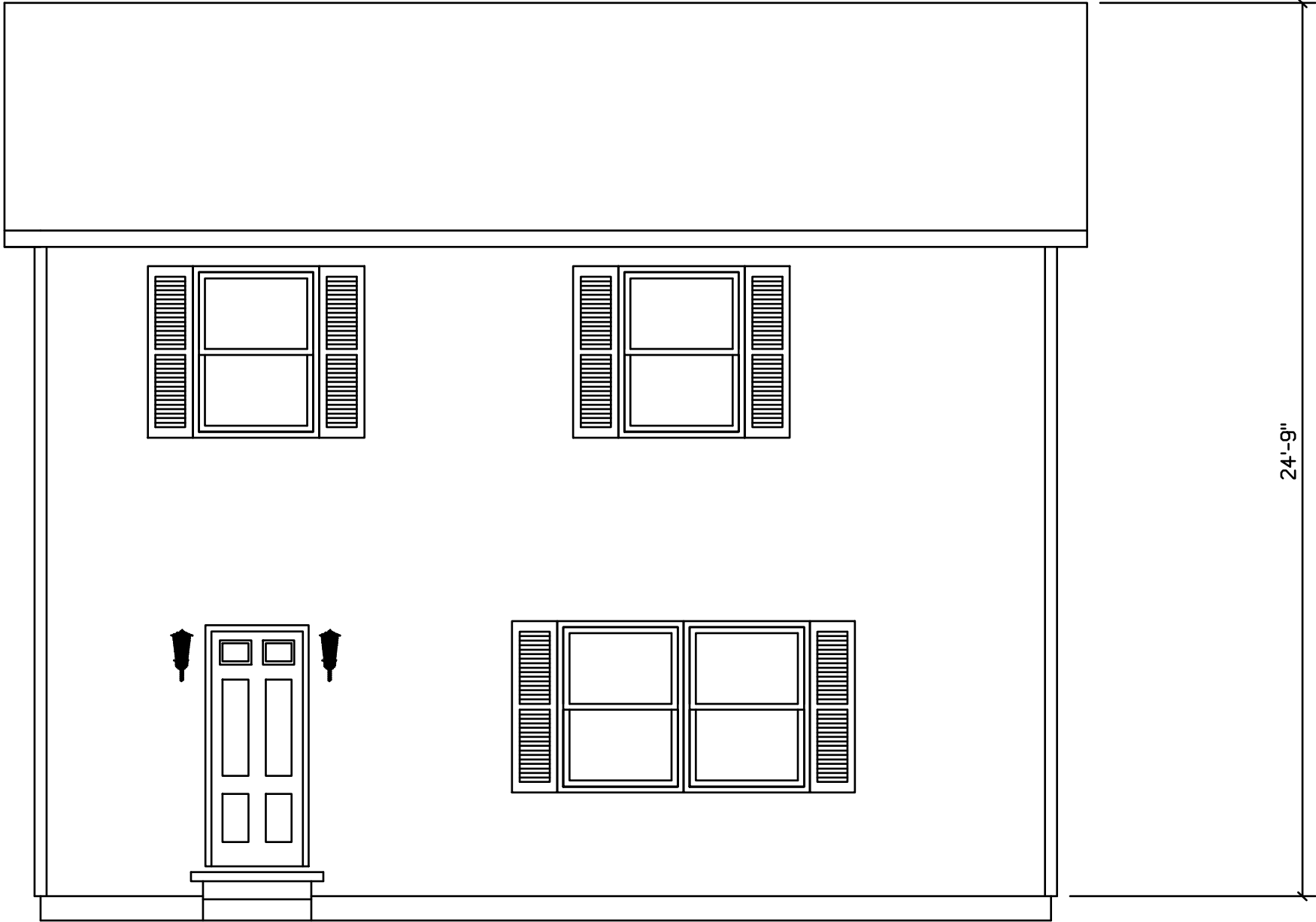


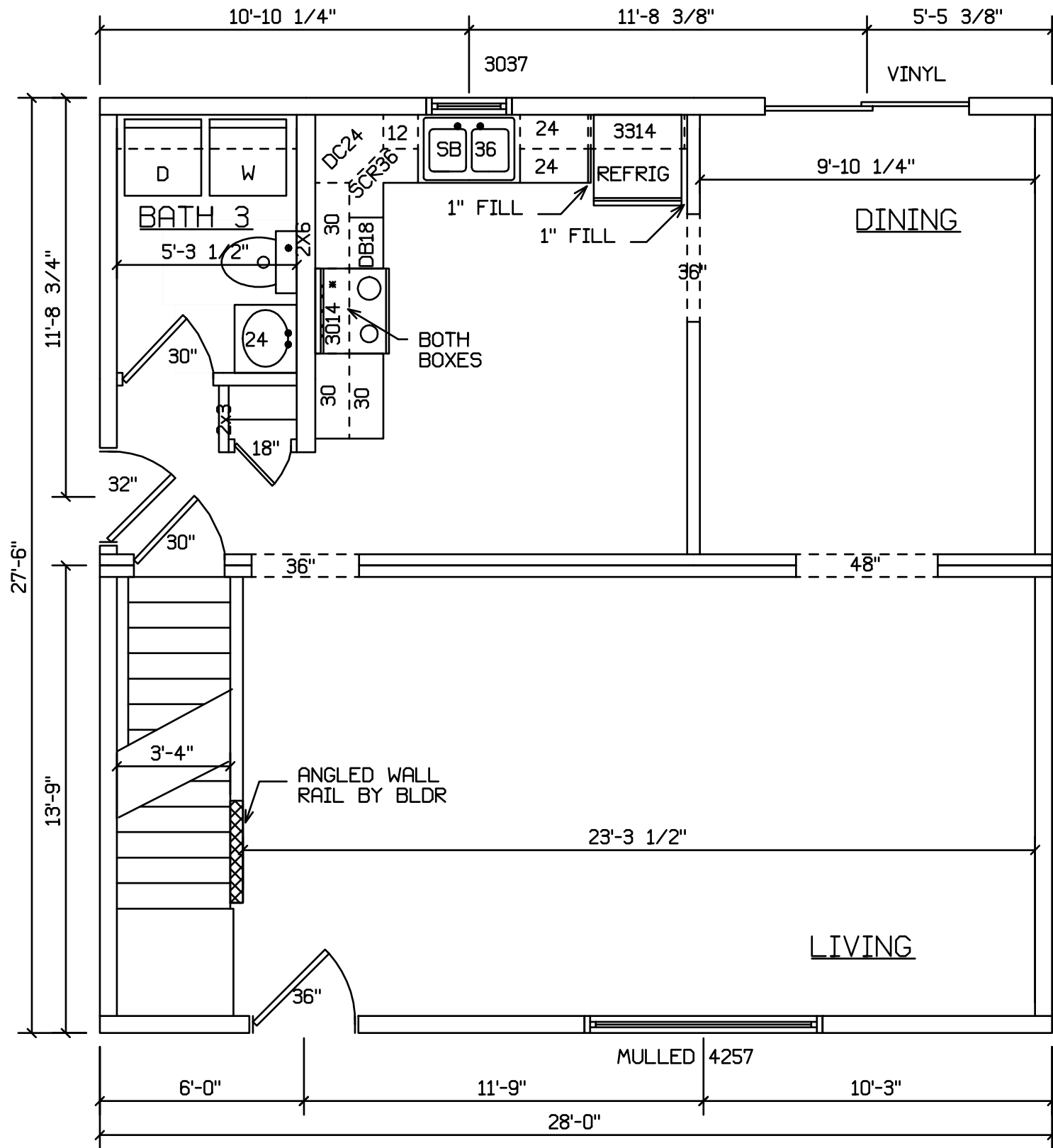
FRANKLIN - 507



FRONT

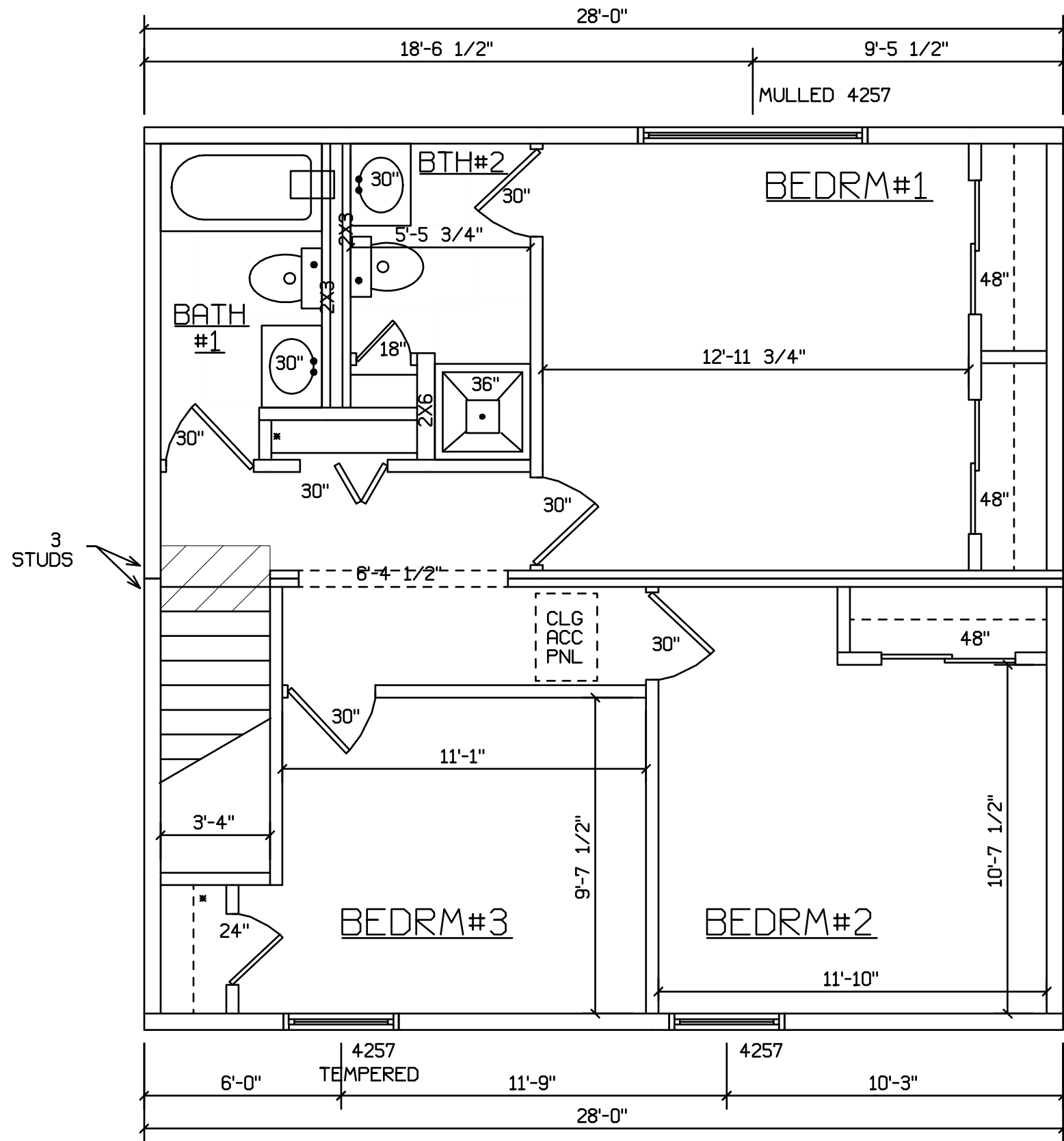
 HOLD BACK GYPBD 1'-0" PER SIDE IN OPEN AREAS

STAIRS DESIGNED TO 8 1/4" RISE MAX., AND 9" TREAD MIN W/ 1 1/8" NOSING



 HOLD BACK GYPBD 1'-0" PER SIDE IN OPEN AREAS

STAIRS DESIGNED TO 8 1/4" RISE MAX., AND 9" TREAD MIN W/ 1 1/8" NOSING



 HOLD BACK GYPBD 1'-0" PER SIDE IN OPEN AREAS

STAIRS DESIGNED TO 8 1/4" RISE MAX., AND 9" TREAD MIN W/ 1 1/8" NOSING