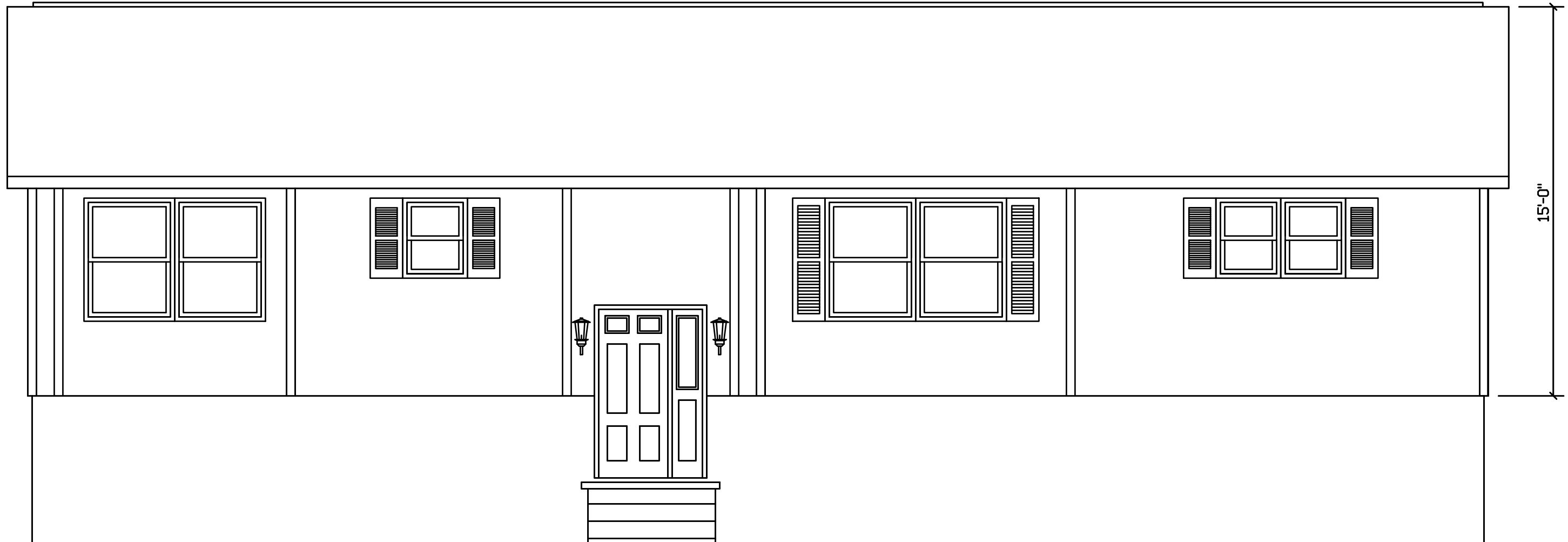


DONORA - 331

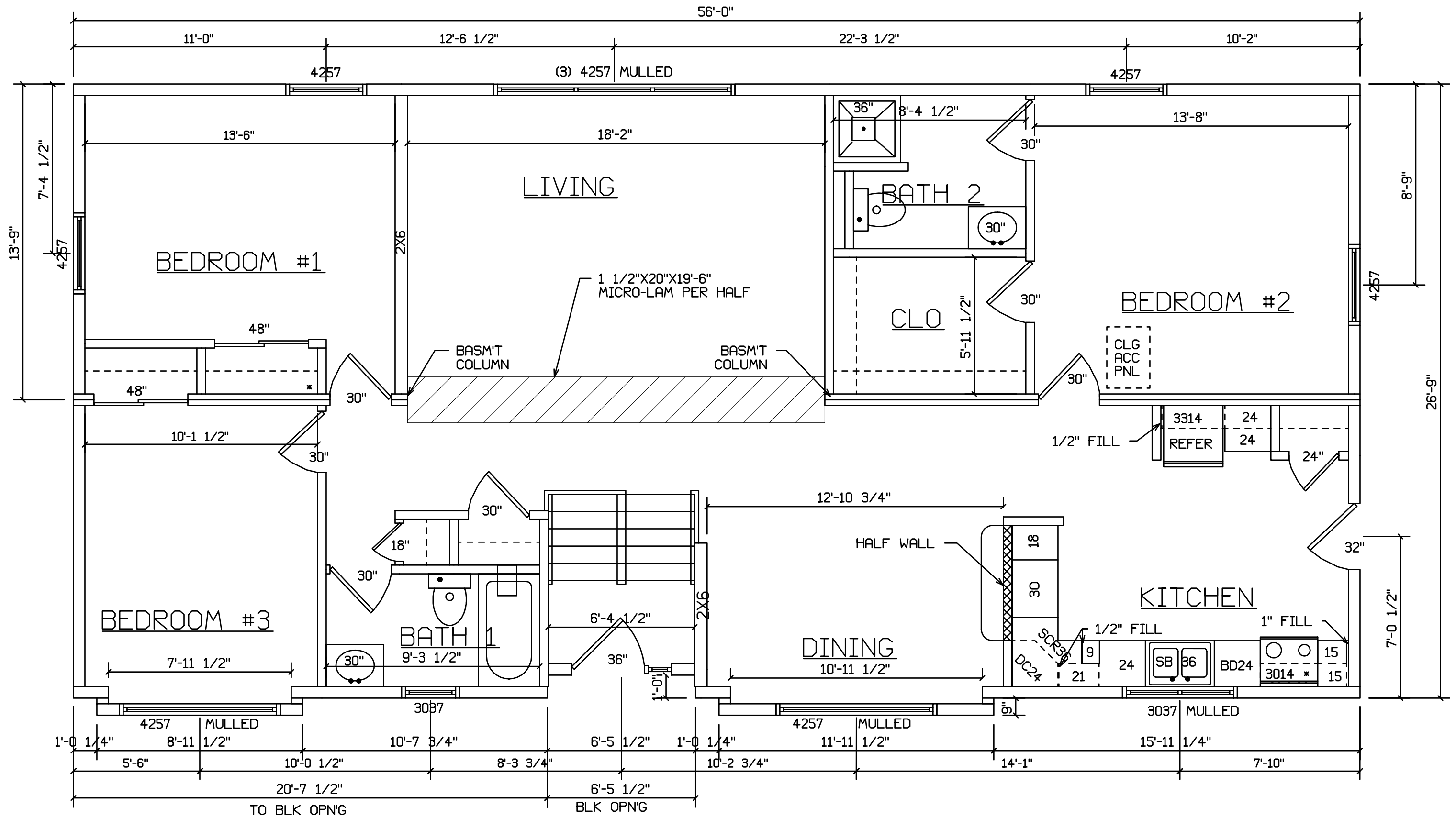


SHUTTERS WILL NOT
FIT @ THIS WINDOW

FRONT

 HOLD BACK GYPBD 1'-0" PER
SIDE IN OPEN AREAS

STAIRS DESIGNED TO 8 1/4" RISE
MAX., AND 9" TREAD MIN W/ 1 1/8" NOSING



INSTALLATION OF INSULATION AND SOFFIT MATERIAL ON CANTILEVER BY BUILDER ON SITE

 HOLD BACK GYPBD 1'-0" PER SIDE IN OPEN AREAS

STAIRS DESIGNED TO 8 1/4" RISE MAX., AND 9" TREAD MIN W/ 1 1/8" NOSING