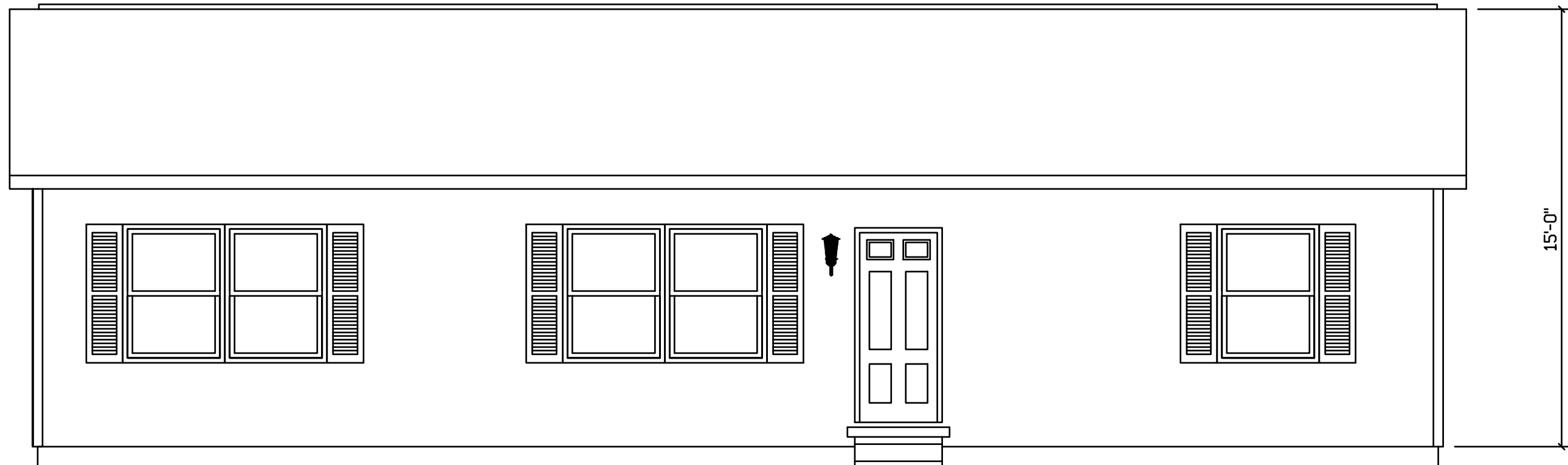
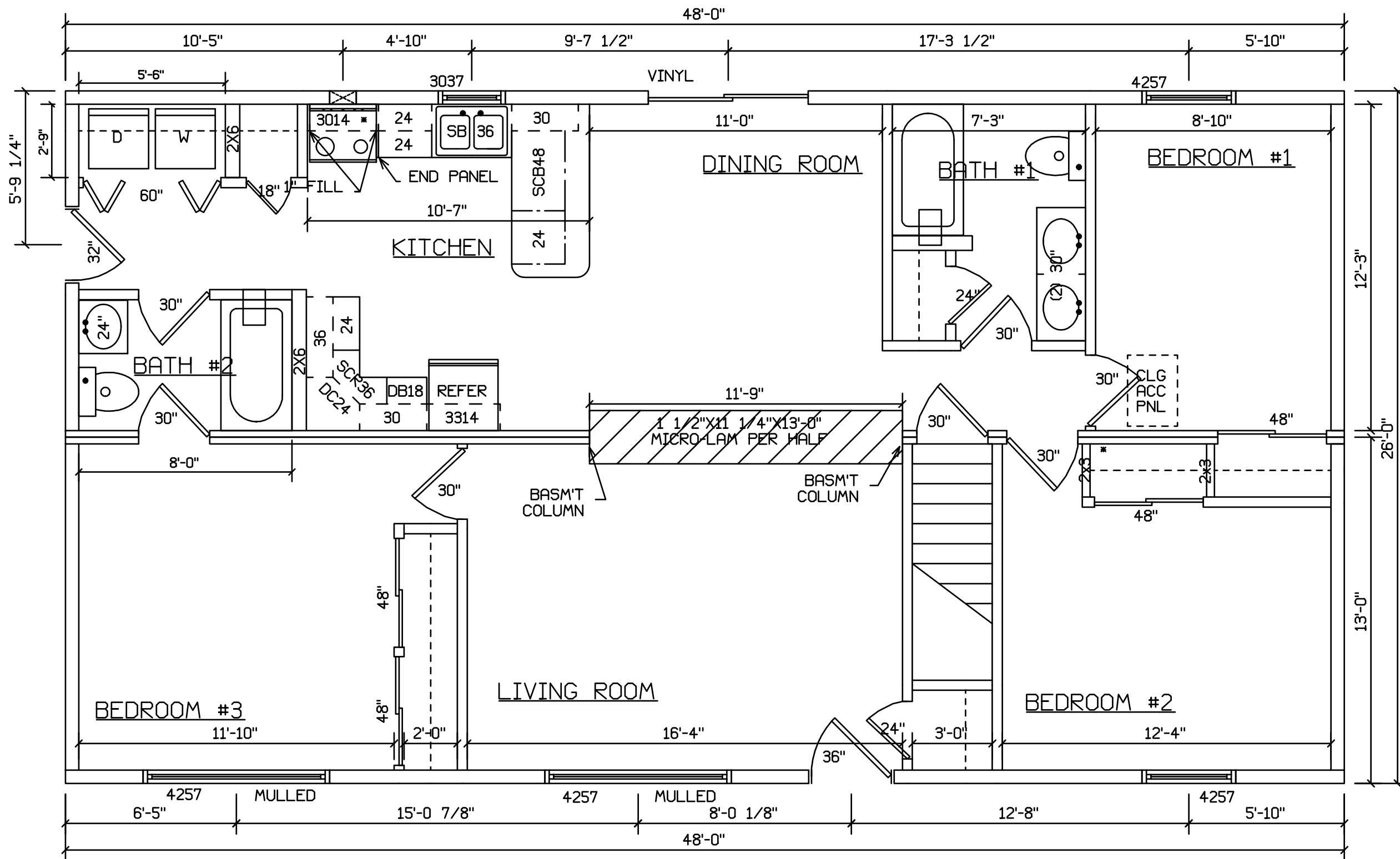


DELEWARE - 263  
REVERSE PLAN



 HOLD BACK GYPBD 1'-0" PER  
SIDE IN OPEN AREAS

STAIRS DESIGNED TO 8 1/4" RISE  
MAX., AND 9" TREAD MIN W/ 1 1/8" NOSING



HOLD BACK GYPBD 1'-0" PER SIDE IN OPEN AREAS

STAIRS DESIGNED TO 8 1/4" RISE MAX., AND 9" TREAD MIN W/ 1 1/8" NOSING