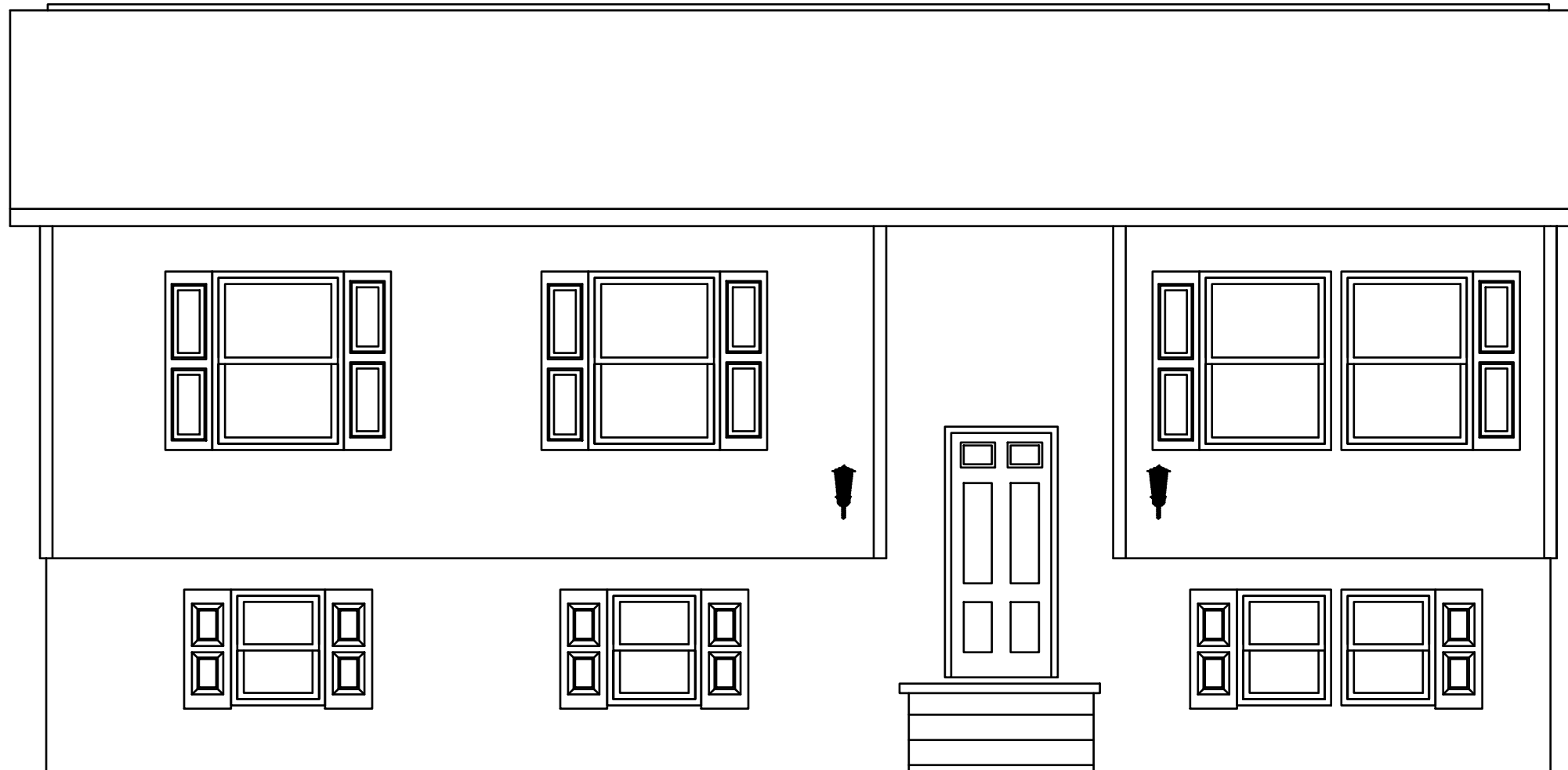


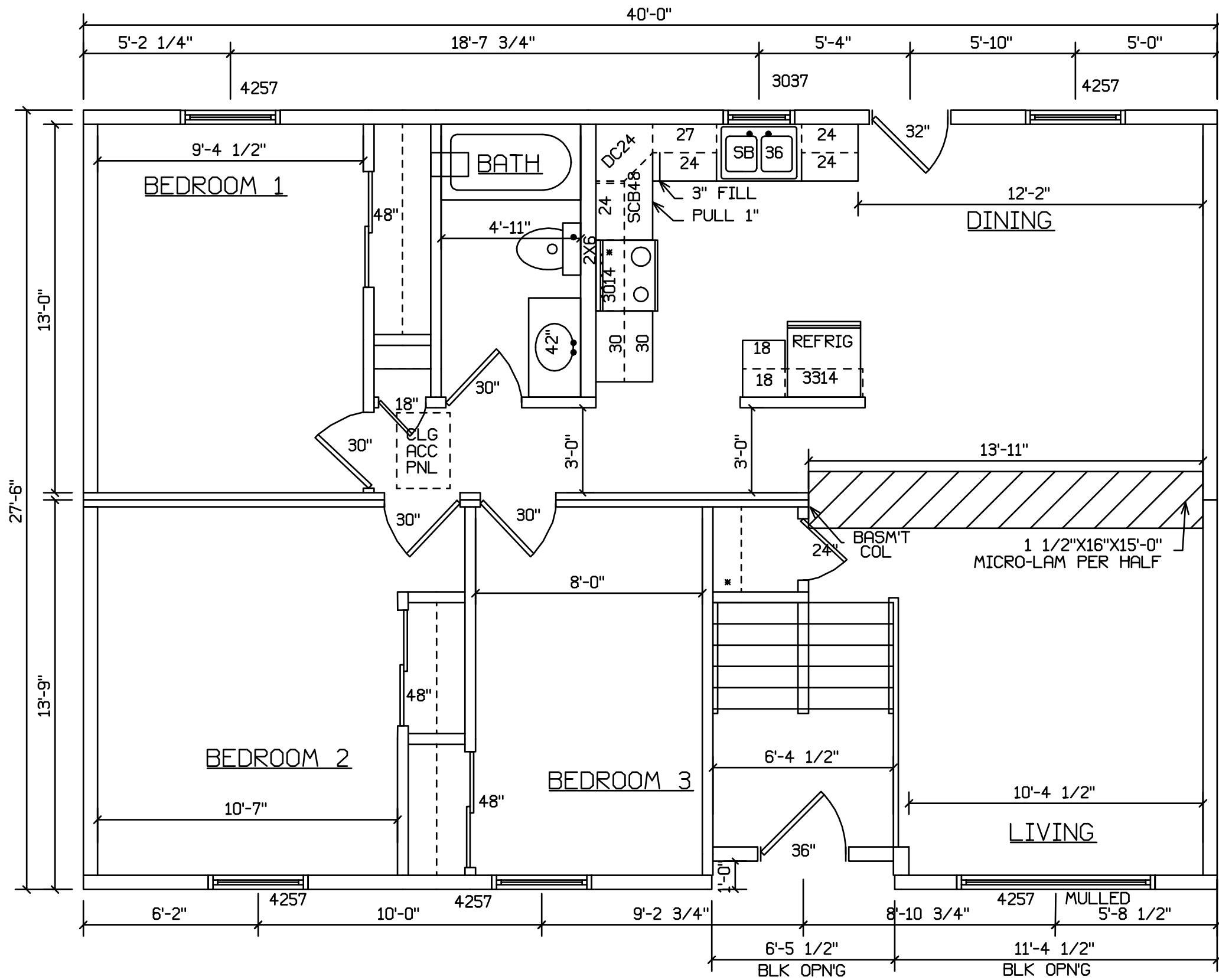
HANOVER - 106  
28 WIDE




FOUNDATION FINISH BY BUILDER  
BASEMENT WINDOWS AND SHUTTER OPIONAL

INSTALLATION OF INSULATION  
AND SOFFIT MATERIAL ON CANTILEVER  
BY BUILDER ON SITE

STAIRS DESIGNED TO 8 1/4" RISE  
MAX., AND 9" TREAD MIN W/ 1 1/8" NOSING



INSTALLATION OF INSULATION  
AND SOFFIT MATERIAL ON CANTILEVER  
BY BUILDER ON SITE

 HOLD BACK GYPBD 1'-0" PER  
SIDE IN OPEN AREAS  
STAIRS DESIGNED TO 8 1/4" RISE  
MAX., AND 9" TREAD MIN W/ 1 1/8" NOSING