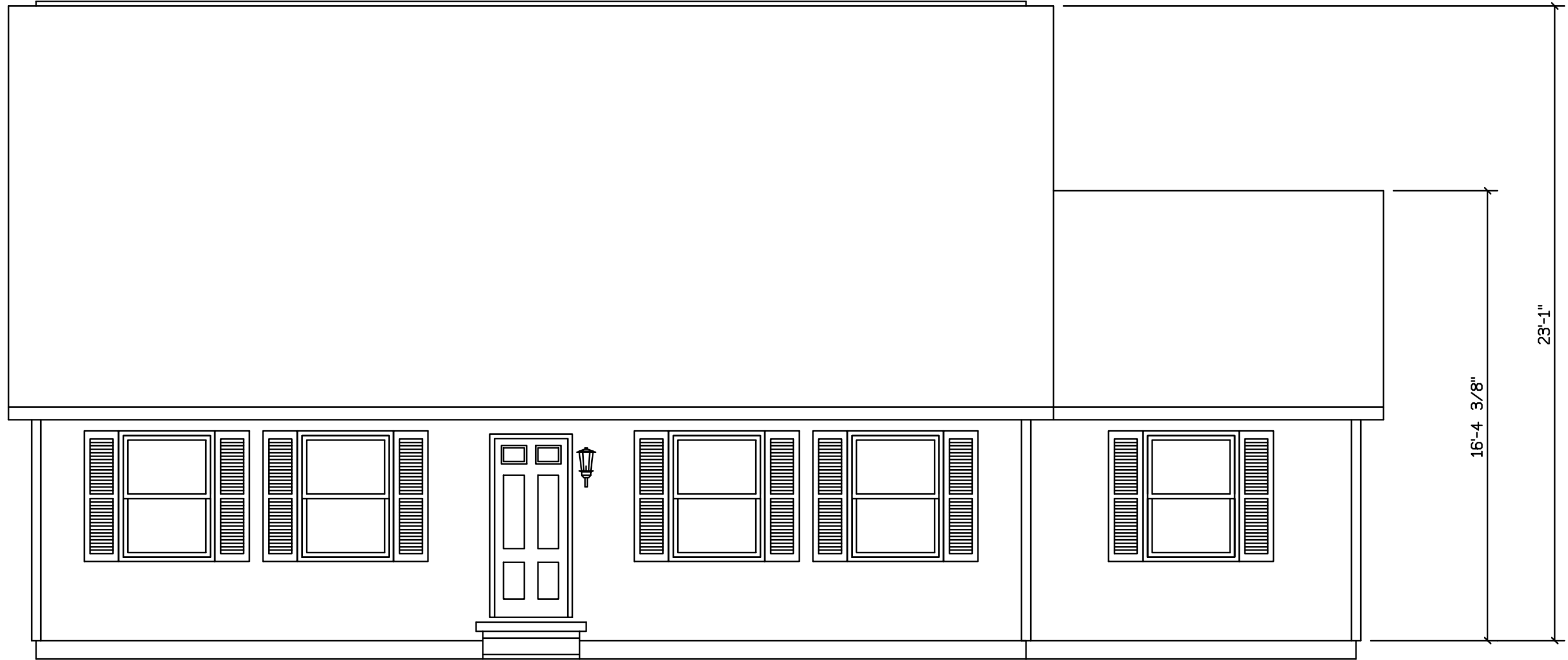
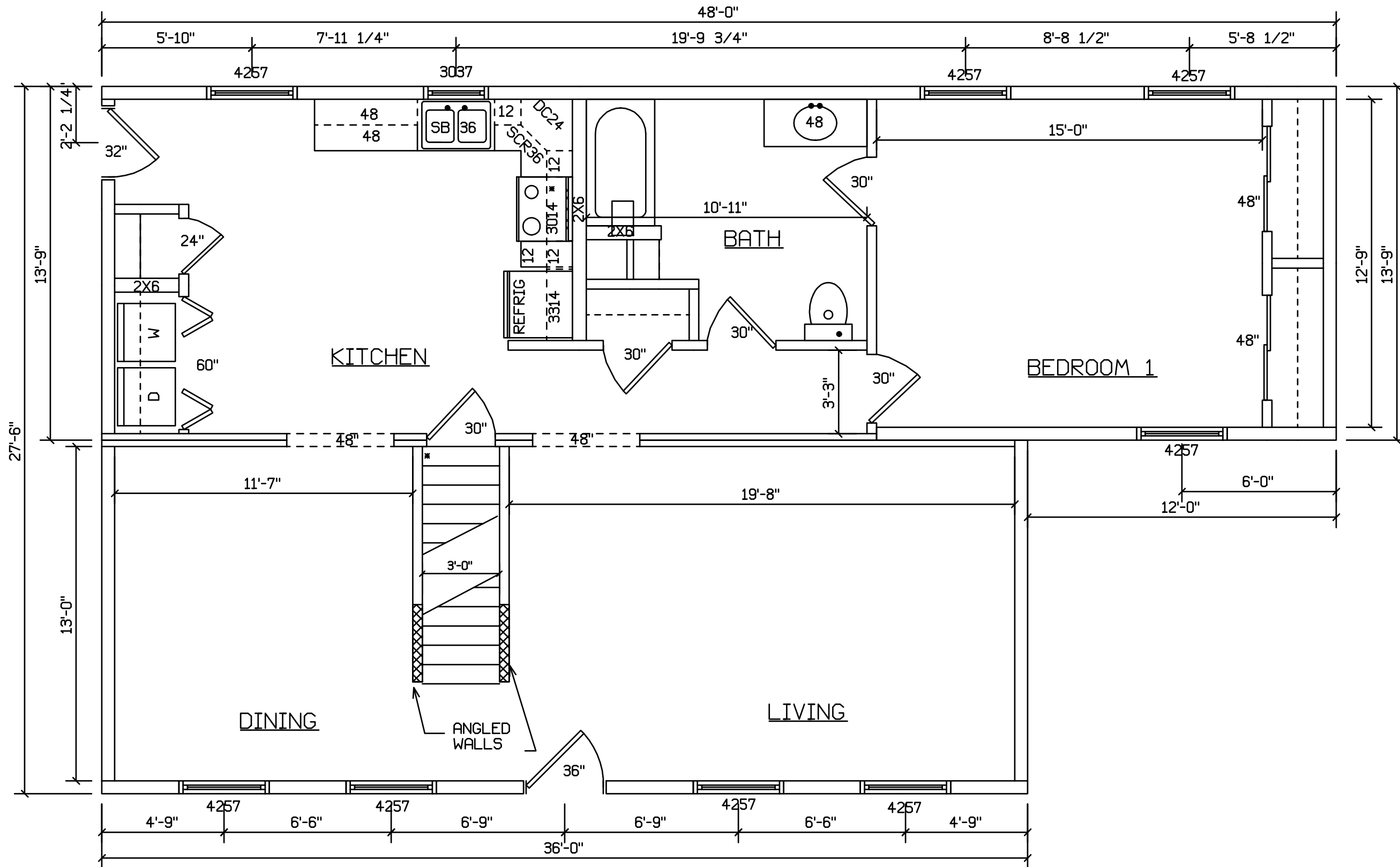


CAPE KENNEDY #340



STAIRS DESIGNED TO 8 1/4" RISE
MAX., AND 9" TREAD MIN W/ 1 1/8" NOSING



STAIRS DESIGNED TO 8 1/4" RISE
 MAX., AND 9" TREAD MIN W/ 1 1/8" NOSING

CAPE KENNEDY #340
WITH OPTIONAL 60" DORMERS



STAIRS DESIGNED TO 8 1/4" RISE
MAX., AND 9" TREAD MIN W/ 1 1/8" NOSING