

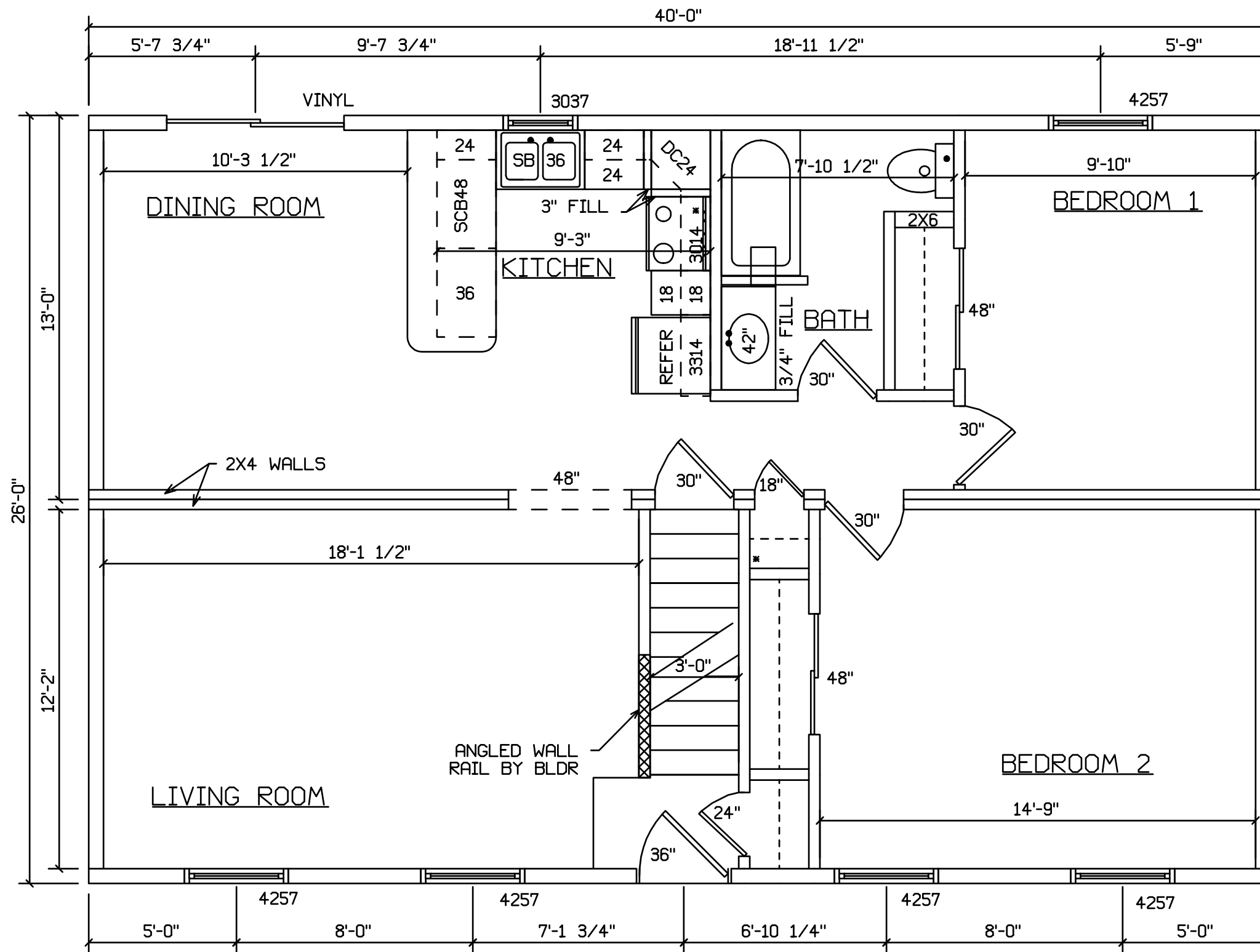
231 CAPE COD  
NEW HAMPSHIRE



FRONT

IF DISHWASHER INSTALLED FILLERS NEED TO  
BE 5" BTWN DW AND CORNER AND 4" BTWN  
CORNER AND RANGE.

STAIRS DESIGNED TO 7 3/4" RISE  
MAX., AND 10" TREAD MIN W/ 1 1/8" NOSING



IF DISHWASHER INSTALLED FILLERS NEED TO BE 5" BTWN DW AND CORNER AND 4" BTWN CORNER AND RANGE.

STAIRS DESIGNED TO 7 3/4" RISE MAX., AND 10" TREAD MIN W/ 1 1/8" NOSING

231 CAPE COD  
NEW HAMPSHIRE  
WITH OPTIONAL 60" DORMERS



FRONT

IF DISHWASHER INSTALLED FILLERS NEED TO  
BE 5" BTWN DW AND CORNER AND 4" BTWN  
CORNER AND RANGE.

STAIRS DESIGNED TO 7 3/4" RISE  
MAX., AND 10" TREAD MIN W/ 1 1/8" NOSING