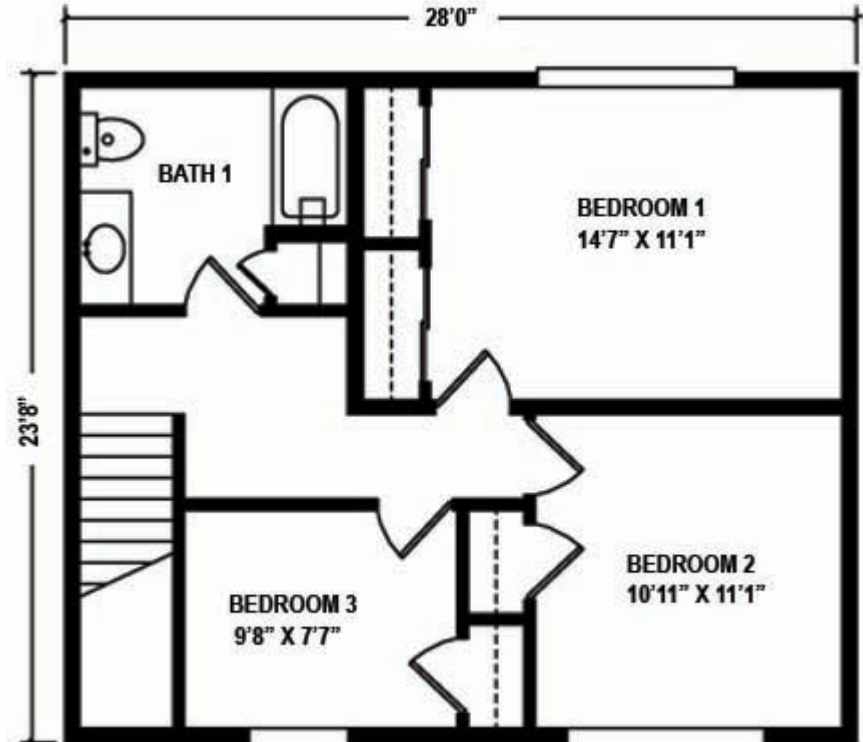
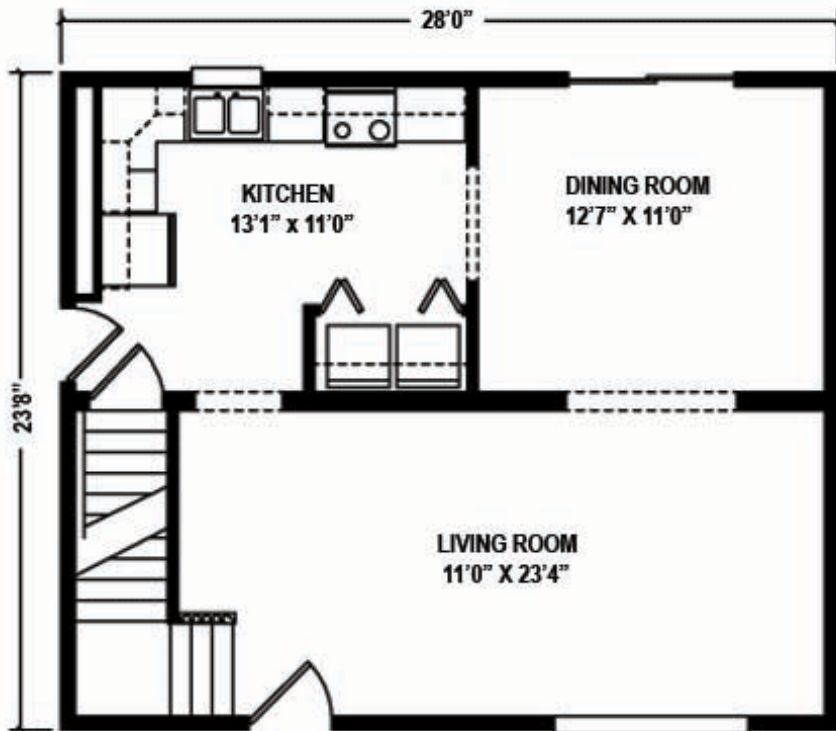


The Norwood

Plan No. 501 1325 Sq. Ft

Offering space and privacy for family or guests, this home features three large bedrooms with generous closet space, spacious bath and expansive living room.

Also available in 26' Width

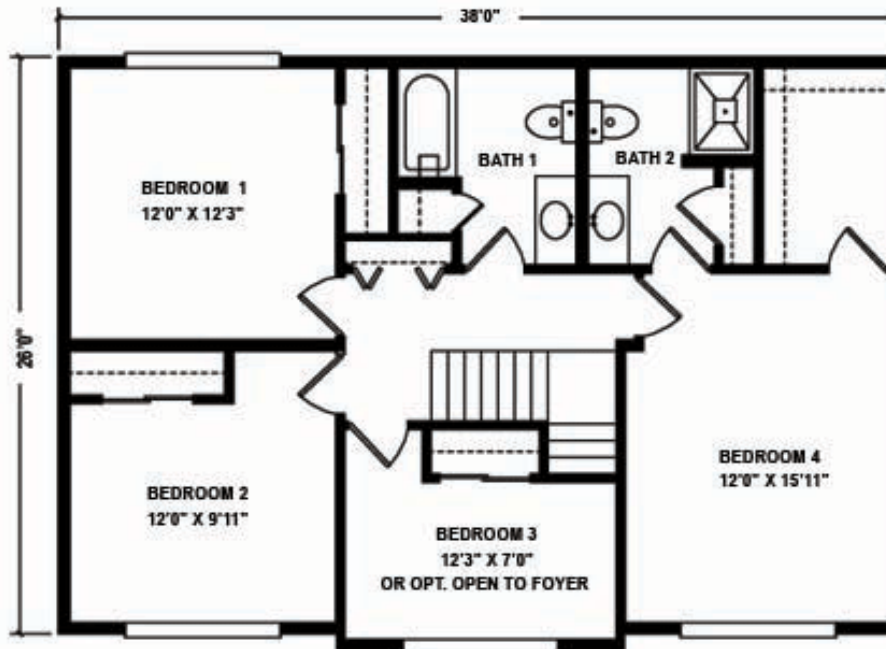
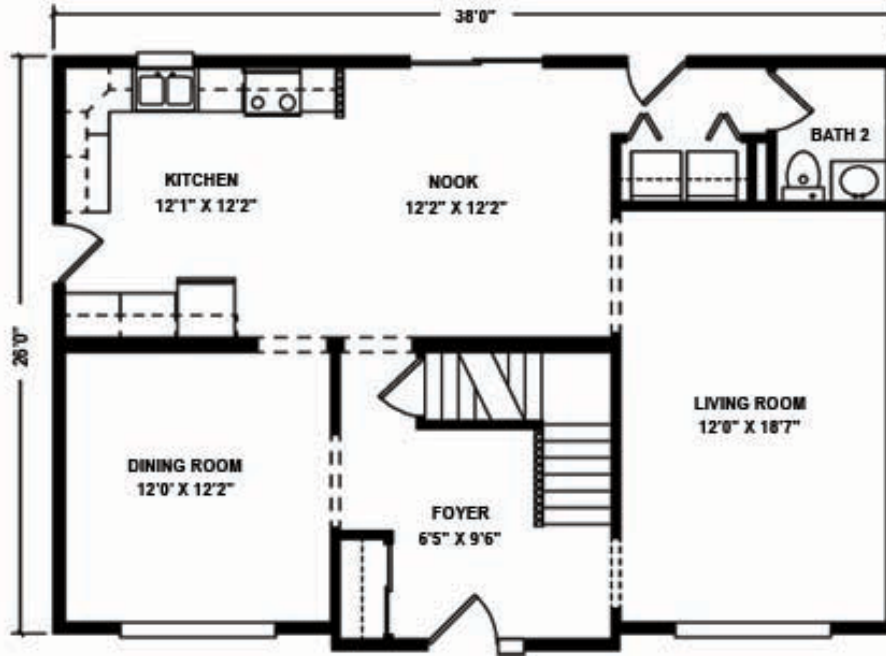


The Bridgeport

Plan No. 504 1976 Sq. Ft

Elegant space for living and entertaining with grand master bedroom suite with tremendous walk-in closet and private bath. Three additional bedrooms, and expansive formal living room.

Also available in 27'6" Width

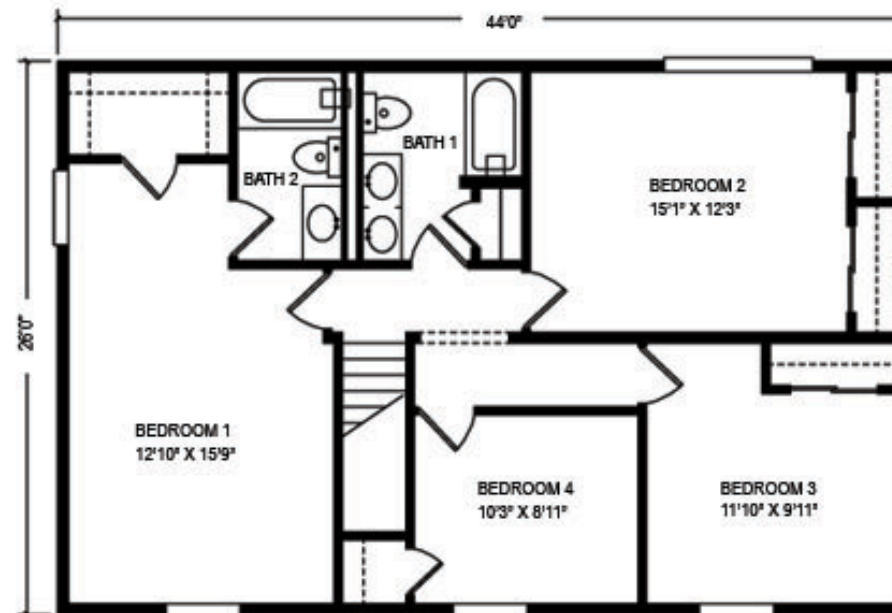
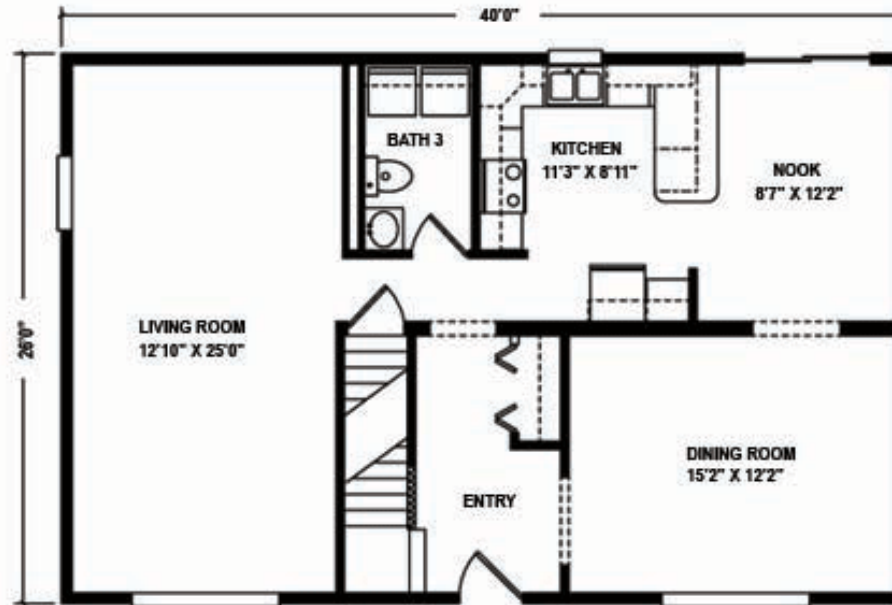


The Chatwood

Plan No. 505 2080 Sq. Ft

Special features and space you'll love with expansive master bedroom suite with private bath and large walk-in closet, three additional bedrooms, one and one half baths.

Also available in 27'6" Width

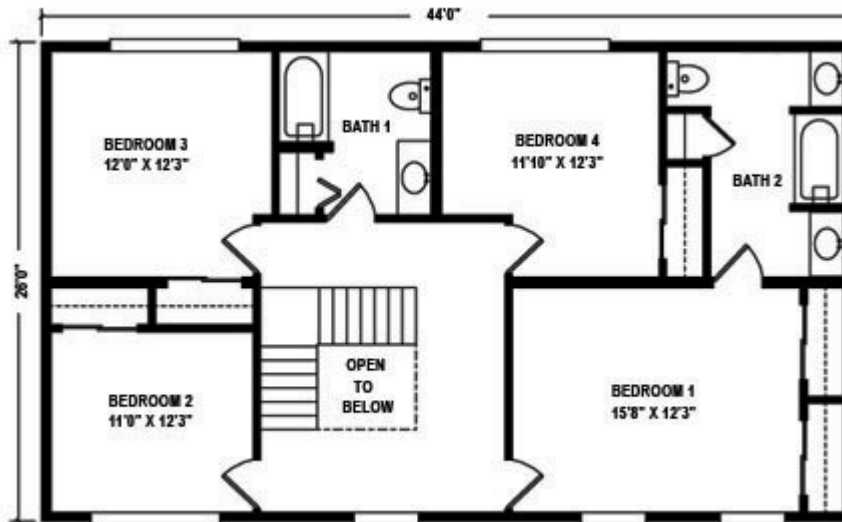
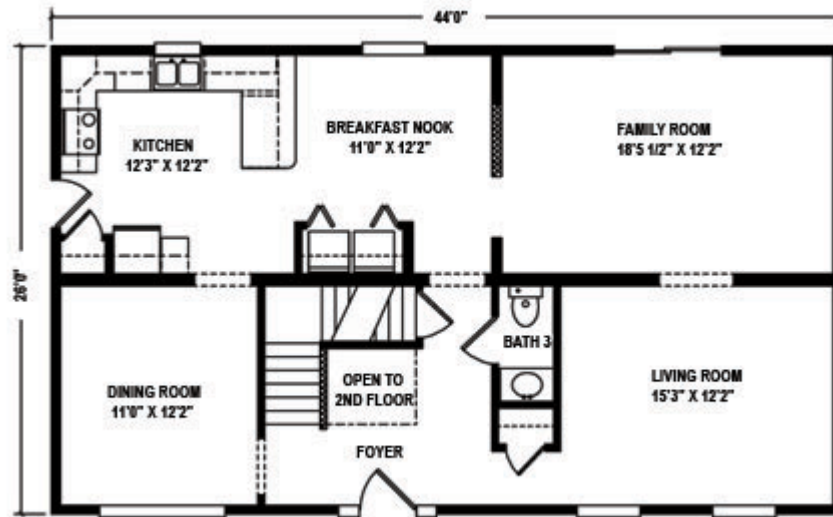


The Crestmont

Plan No. 506 2288 Sq. Ft

A true "Family" home with immense master bedroom with adjoining bath area that features his and hers bath vanities, three additional bedrooms, one and one half baths, first floor laundry area, large kitchen and breakfast nook.

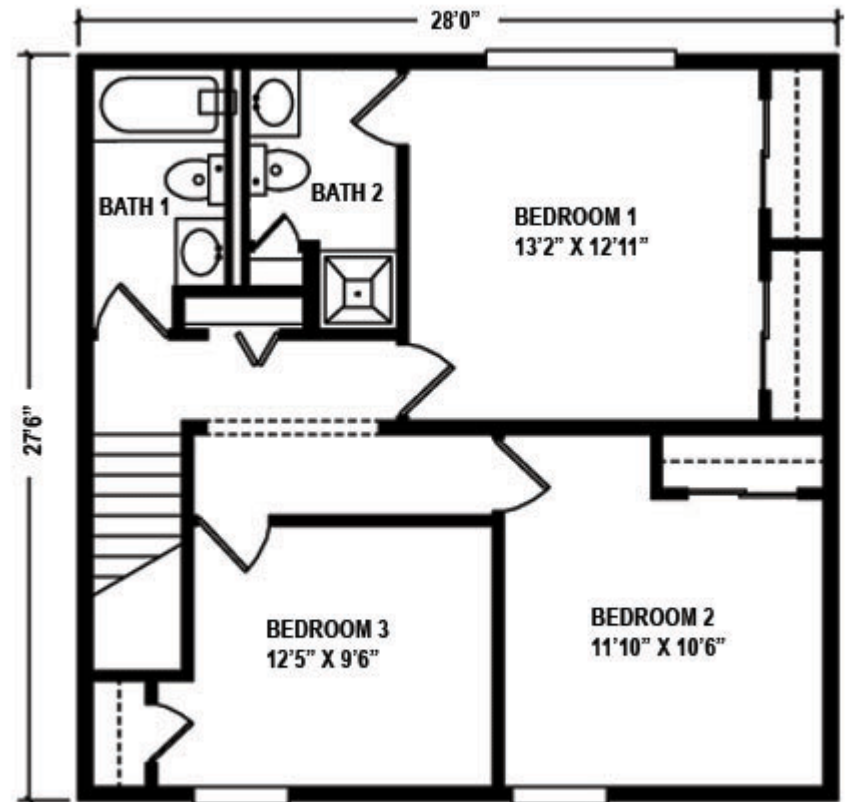
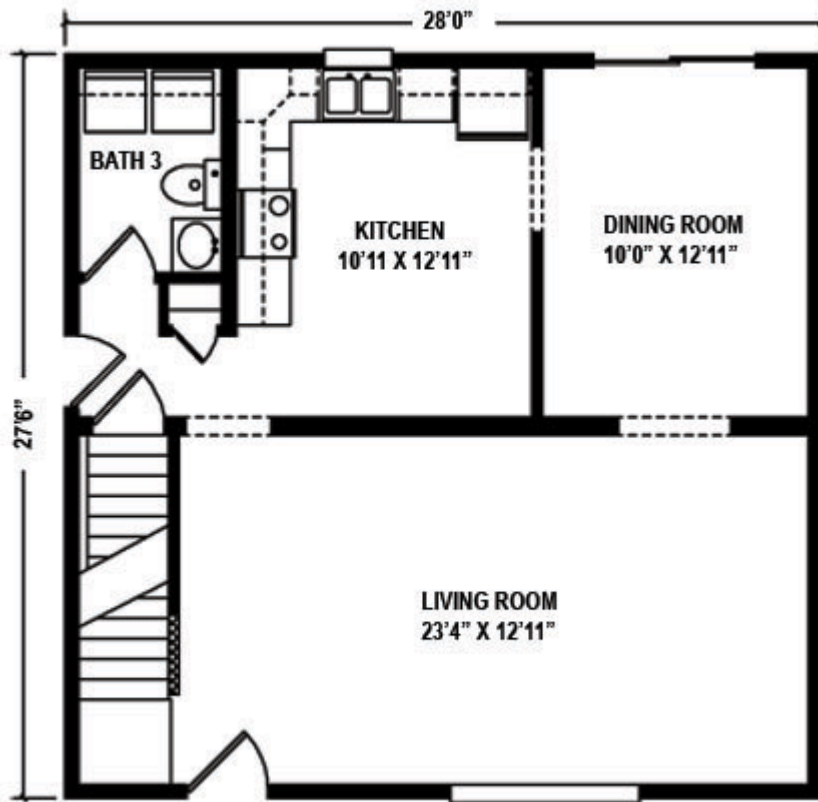
Also available in 27'6" Width



The Franklin

Plan No. 507 1540 Sq. Ft

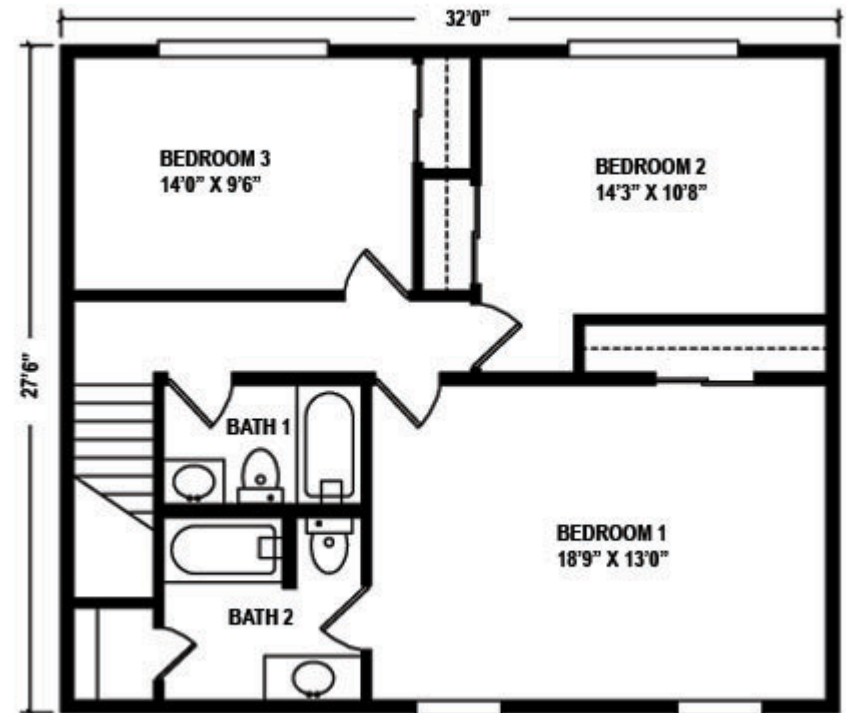
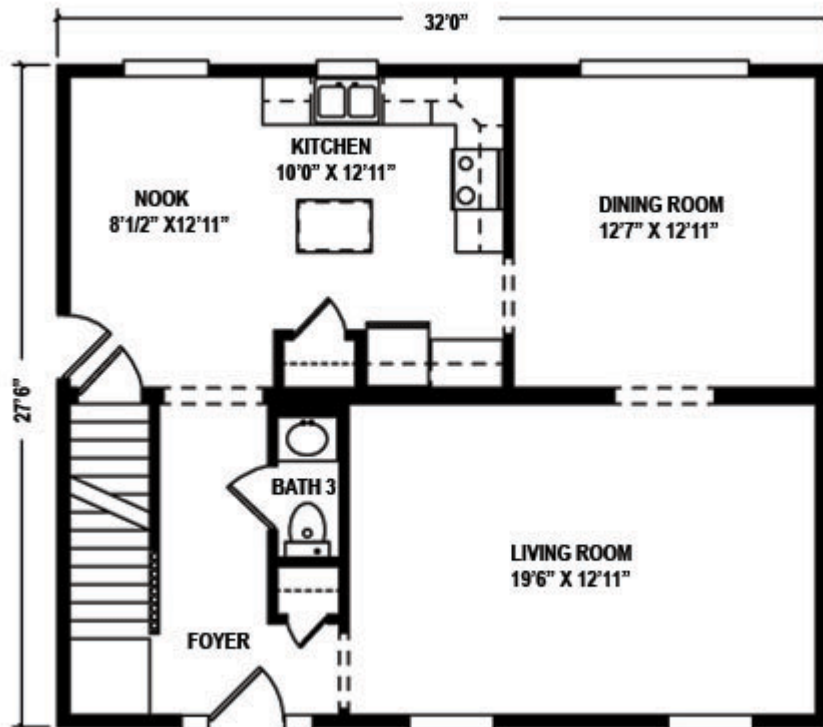
Convenience and features that make a house a home, such as large master bedroom with three quarter bath, two additional bedrooms, one and one half baths, with first floor laundry area, spacious kitchen, and formal dining room.



The Freeport

Plan No. 508 1760 Sq. Ft

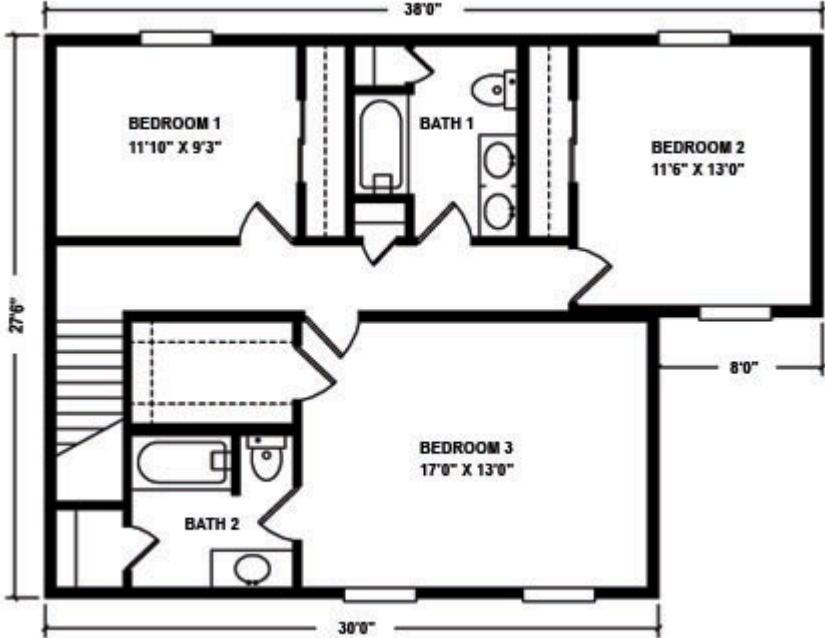
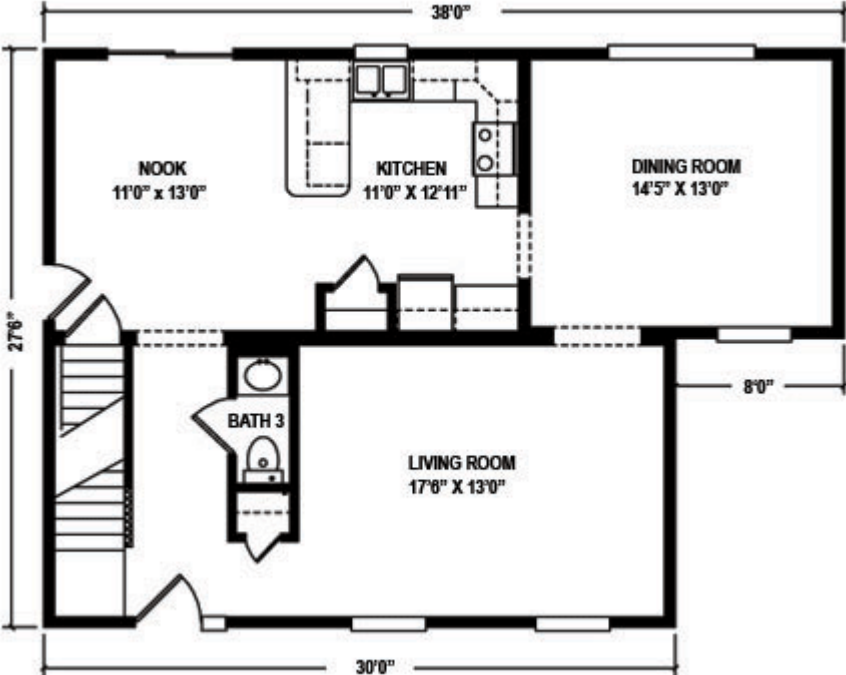
Welcome home to comfort with a master bedroom with a full bath, two additional bedrooms, one and one half baths, large kitchen with island, formal dining room, elegant foyer and spacious living room.



The Jamestown

Plan No. 510 1870 Sq. Ft

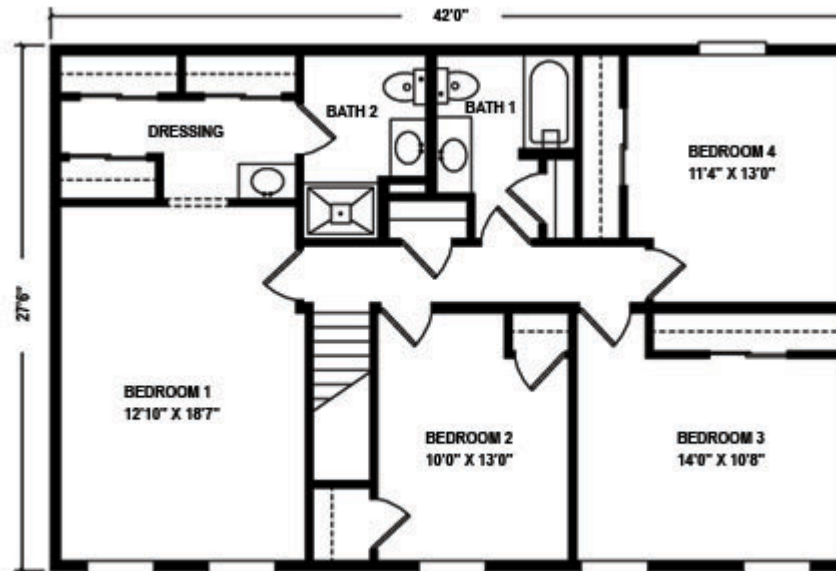
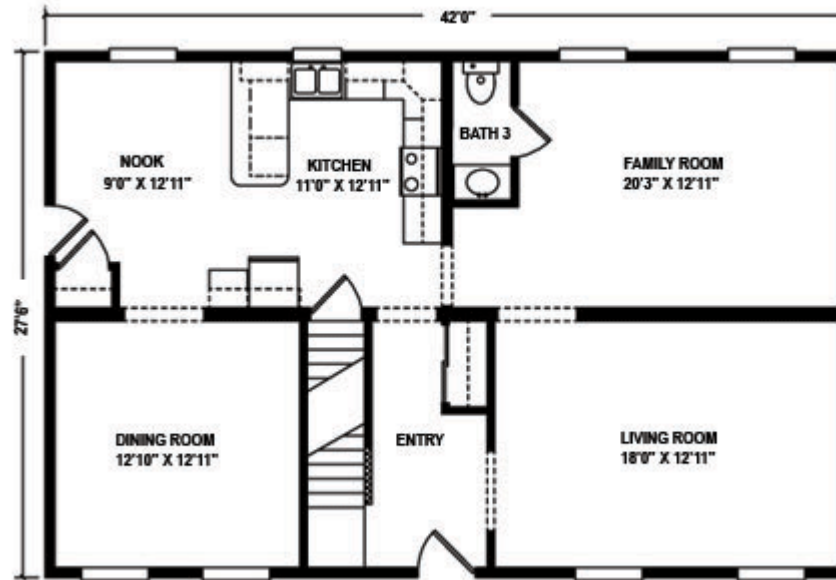
Featuring large master bedroom suite with private bath and walk-in closet, two additional bedrooms, one and one half baths, and formal dining room.



The Gettysburg

Plan No. 512 2310 Sq. Ft

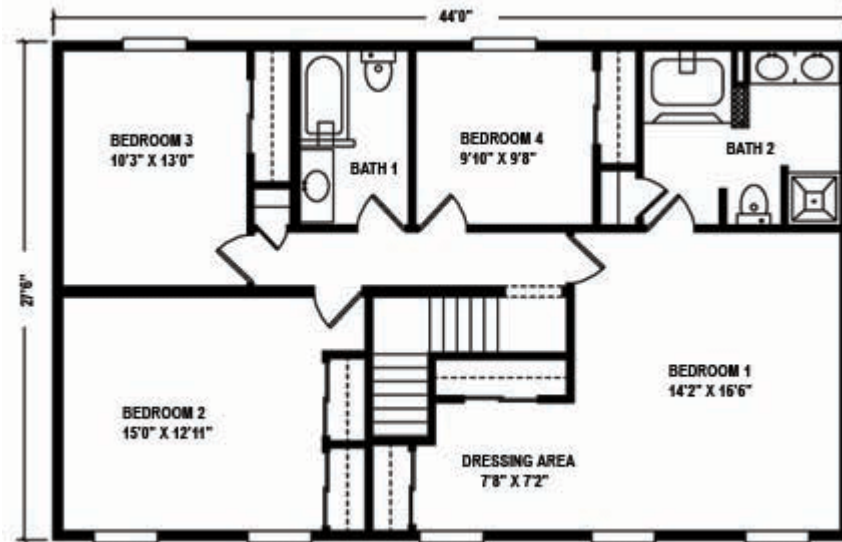
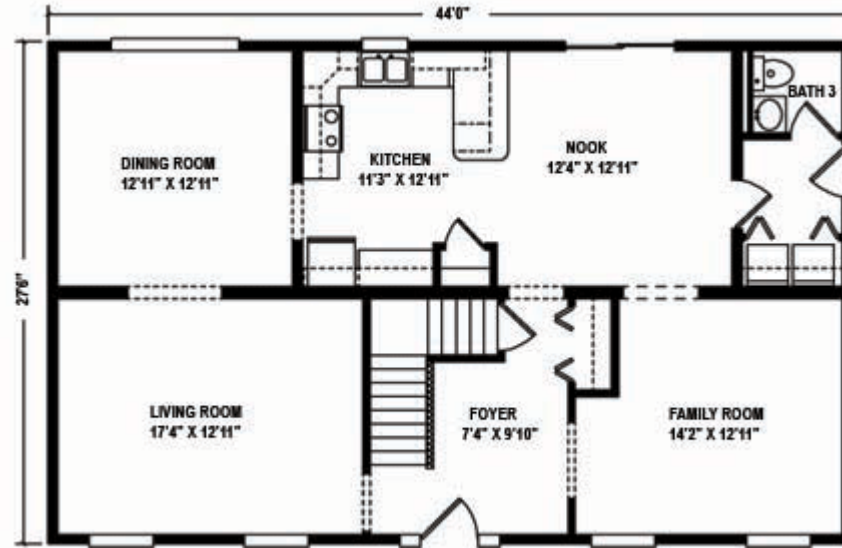
Comfort and convenience with expansive master bedroom suite with adjoining bath and dressing area, three additional bedrooms, one and one half baths, large kitchen, and family room.



The Williamsburg

Plan No. 503 2420 Sq. Ft

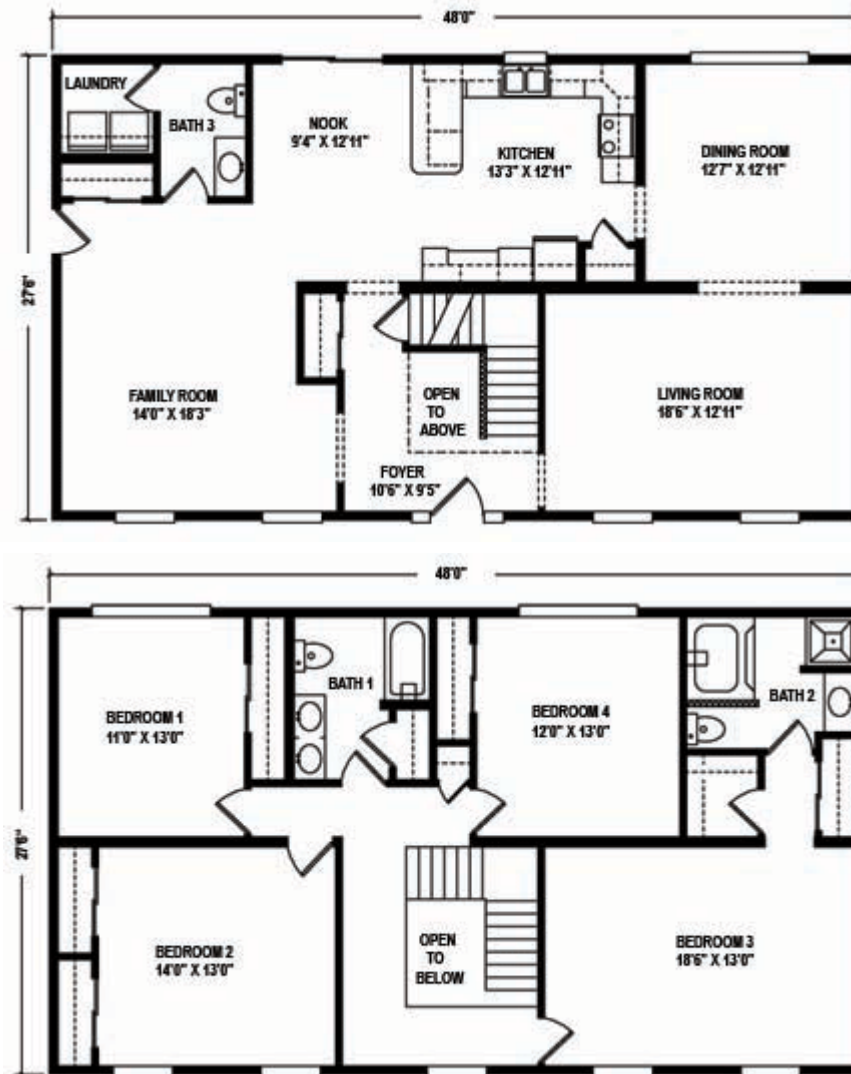
Space for the growing family, super master bedroom suite with private bath and dressing / sitting area, one and one half baths, three additional bedrooms, spacious family room and large, sunny breakfast room.



The Martinsburg

Plan No. 513 2640 Sq. Ft

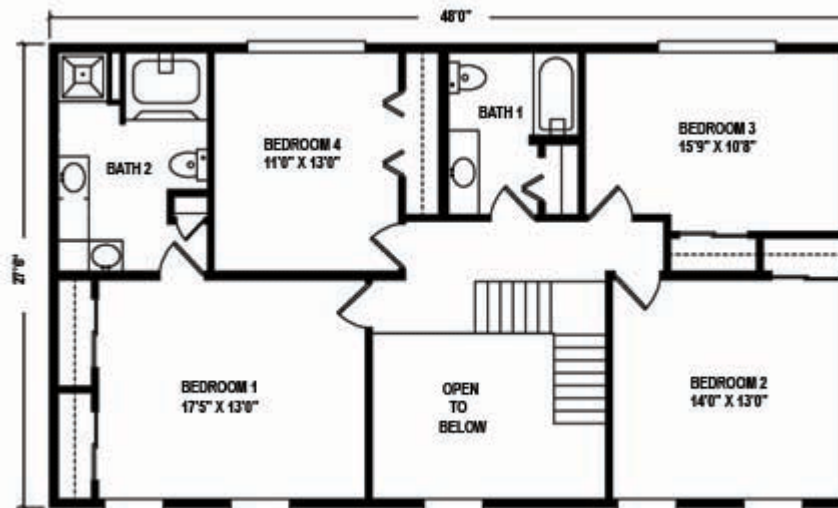
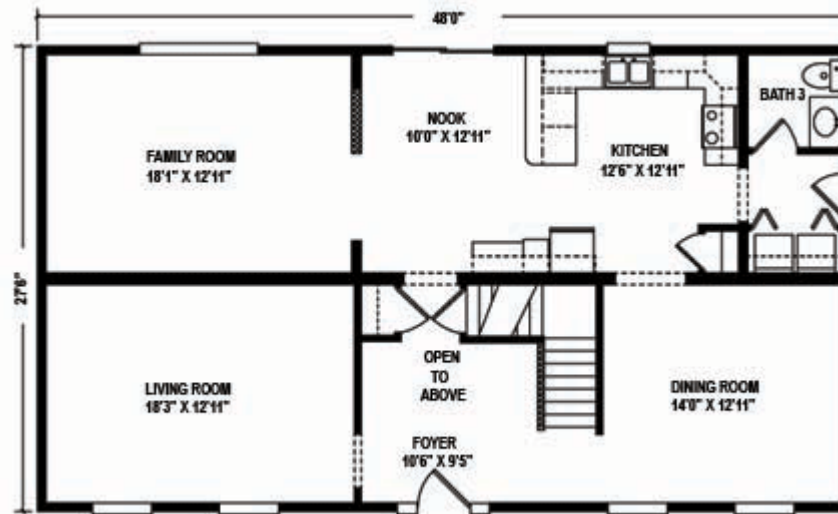
Come home to luxurious space with grand master suite featuring a walk-in closet and a large private bath, one and one half baths, three additional bedrooms, family room, and a formal dining room.



The Oakmont

Plan No. 514 2640 Sq. Ft

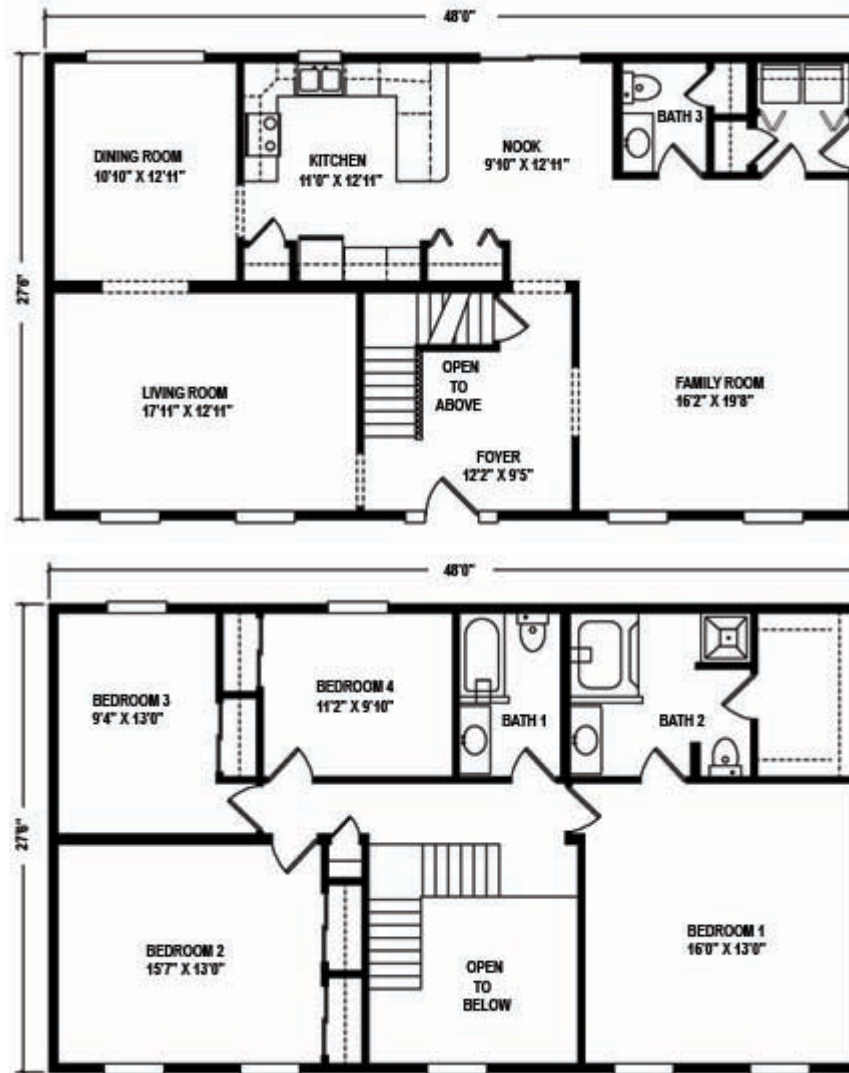
Featuring an elegant open foyer, family room, large kitchen / breakfast area, formal dining room, massive master bedroom with private deluxe bath, one and one half additional bathrooms with three additional bedrooms.



The Oxford

Plan No. 515 2640 Sq. Ft

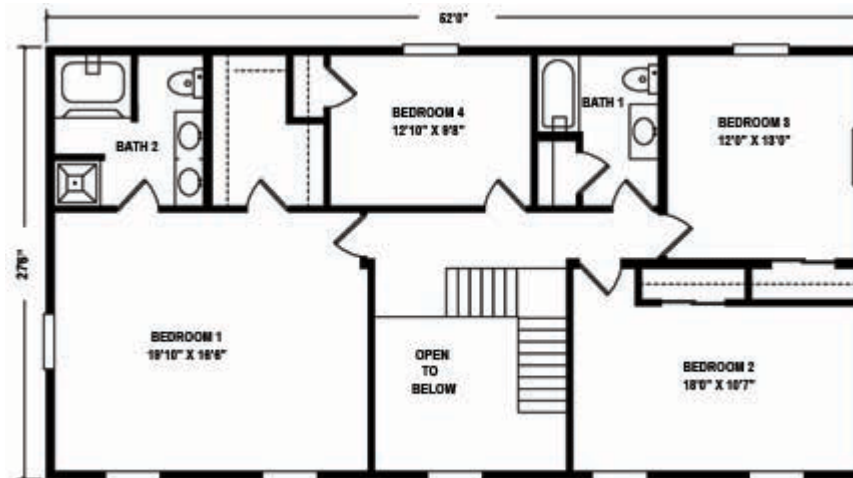
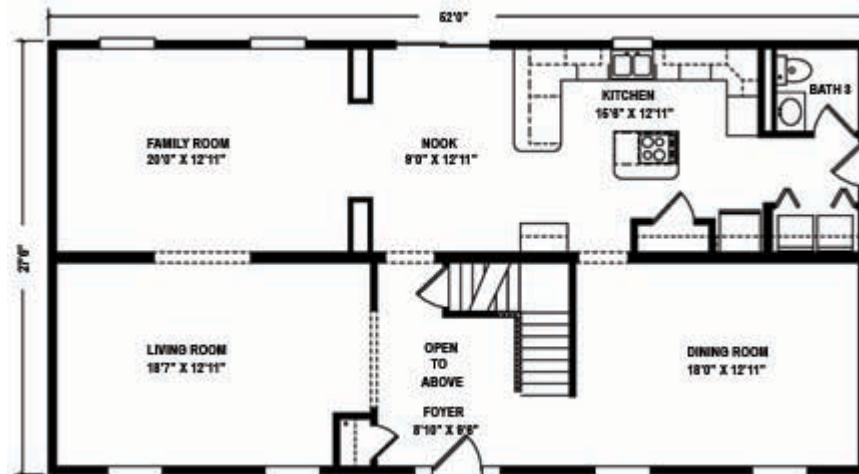
So many facets make this home a gem, featuring grand master bedroom suite with a walk-in closet and luxurious private bath, three additional bedrooms, one and one half baths, elegant staircase open to the foyer, convenient first floor laundry.



The Rutledge

Plan No. 516 2860 Sq. Ft

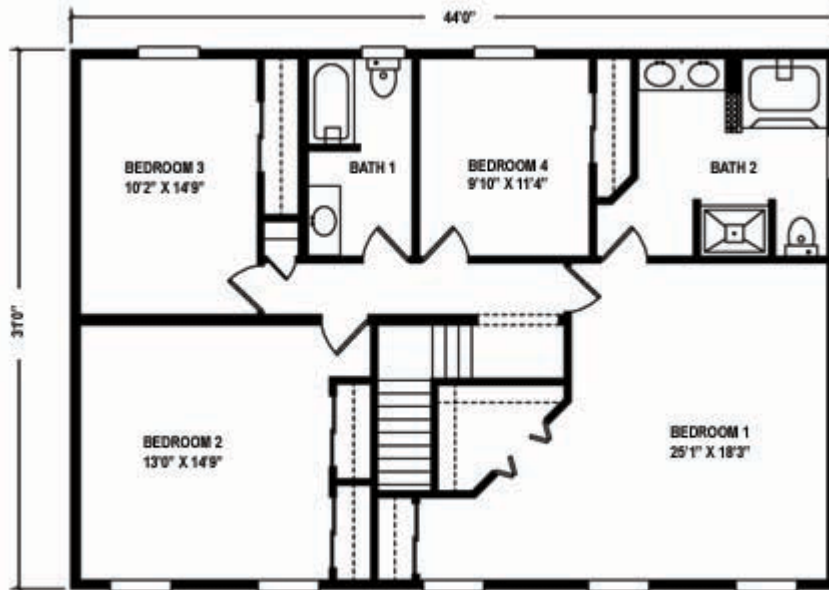
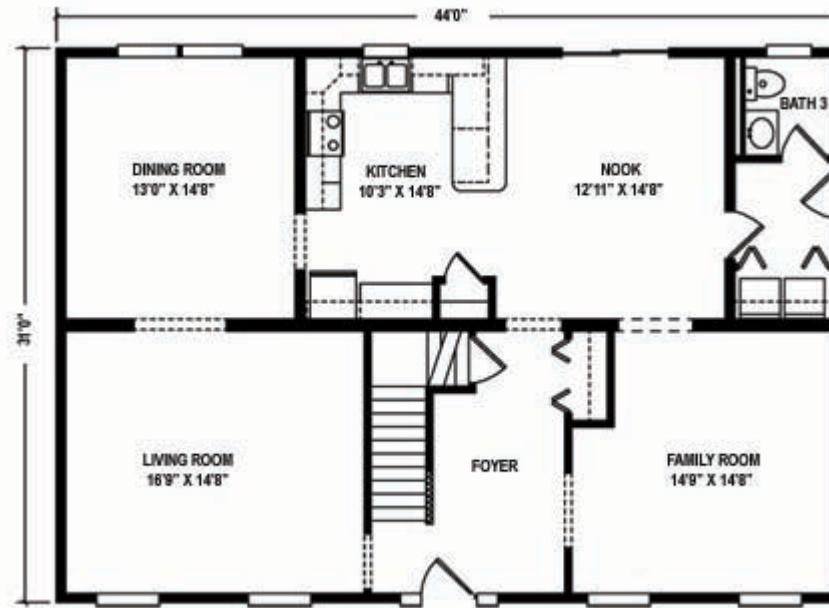
The ultimate in luxurious convenience, featuring a grand master bedroom suite with a walk-in closet and deluxe private bath, three additional spacious bedrooms, one and one half baths, family room, welcoming entrance open foyer.



Highland - Plan 780

2728 Sq. Ft

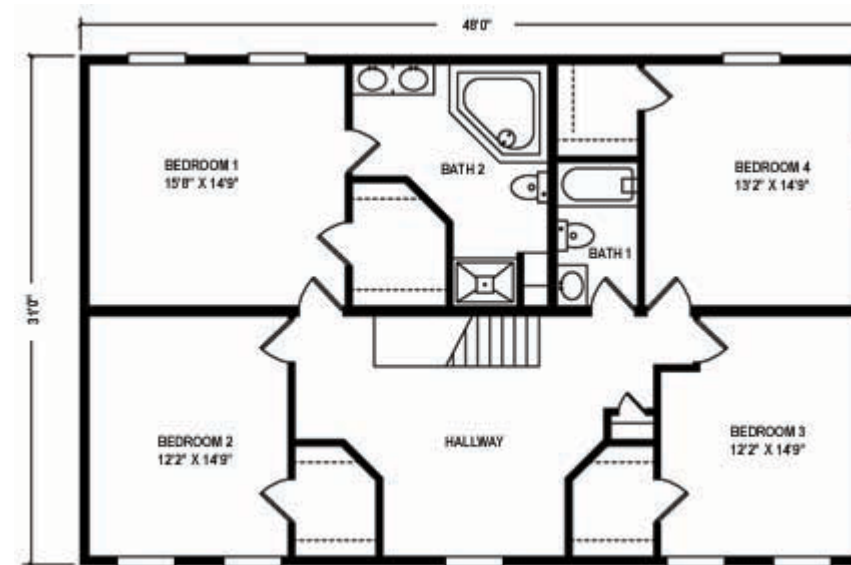
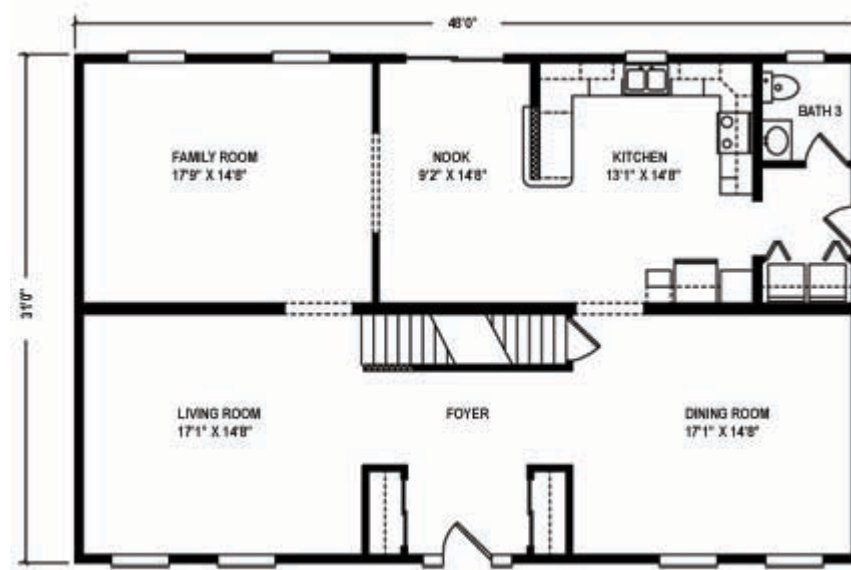
Space for the growing family. Super master bedroom suite with a private bath and dressing / sitting area, one and one half baths, three additional bedrooms, spacious family room and a large sunny breakfast nook.



Highland - Plan 785

2976 Sq. Ft

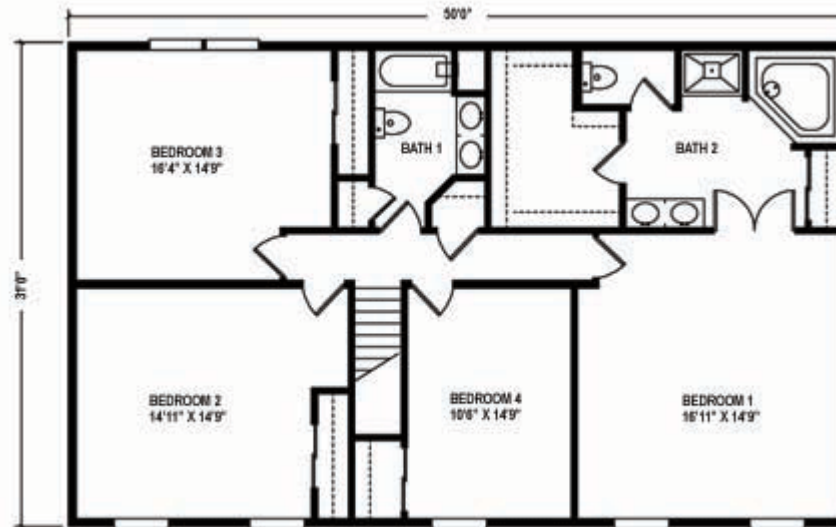
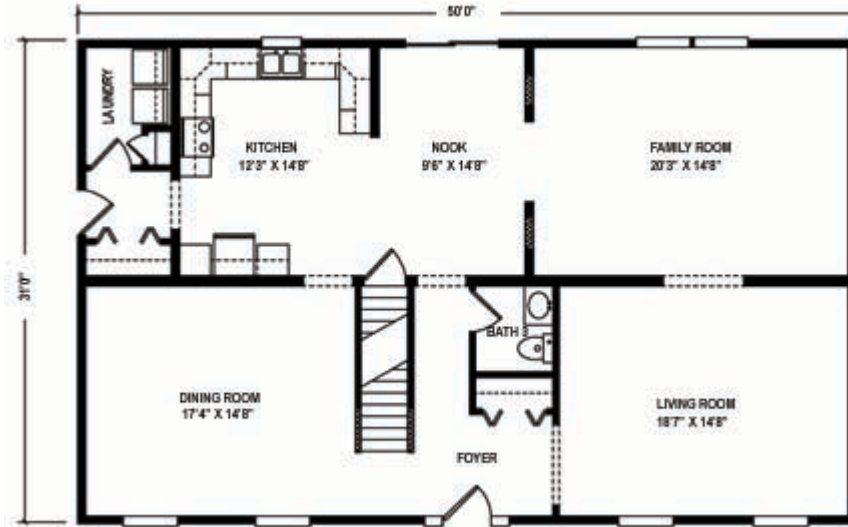
Exceptional living and abundant space features you'll love. Massive formal entry, formal living and dining rooms, a family room, spacious kitchen with breakfast nook, large master bedroom suite, bonus area on second floor hallway, four bedrooms with closets galore, two and one half baths, all this welcomes you to comfortable living.



Highland - Plan 786

3100 Sq. Ft

So many facets make this home a gem. Features like a grand master bedroom suite with walk-in closet, deluxe private bath, three additional spacious bedrooms, one and one half baths, a laundry room, formal living and dining rooms and a family room.



Highland - Plan 792

3224 Sq. Ft

Elegant space for living and entertaining, with a spacious family room, formal living and dining rooms, a grand entry foyer, four bedrooms with ample closet space, and two and one half baths.

