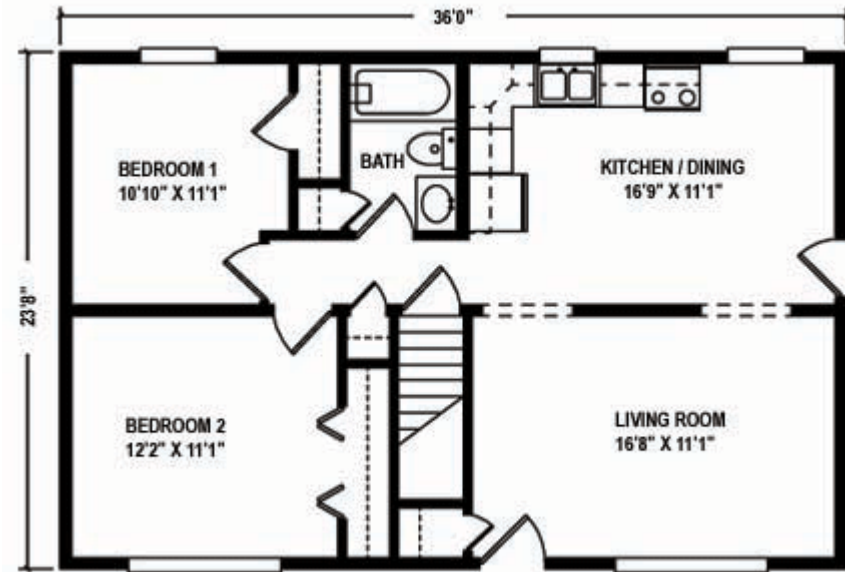


## The Cameron

Plan No. 141 852 Sq. Ft

Welcome home to charming simplicity, featuring two bedrooms, full bath, large living room and bright, open dining room / kitchen area.

Also available in 26' and 27'6" width.

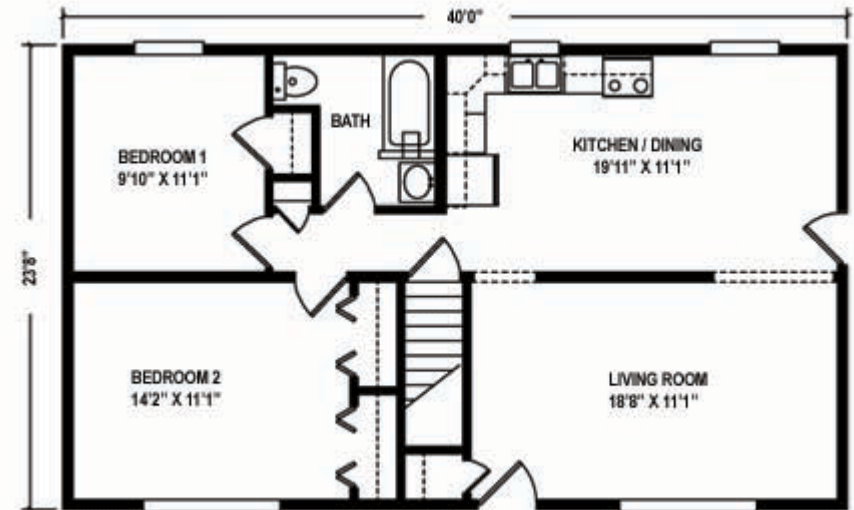


## The Clinton

**Plan No. 142 946 Sq. Ft**

Two Spacious bedrooms with a large living room and combination kitchen/dining room make this the ideal starter home.

Also available in 26' and 27'6" width.

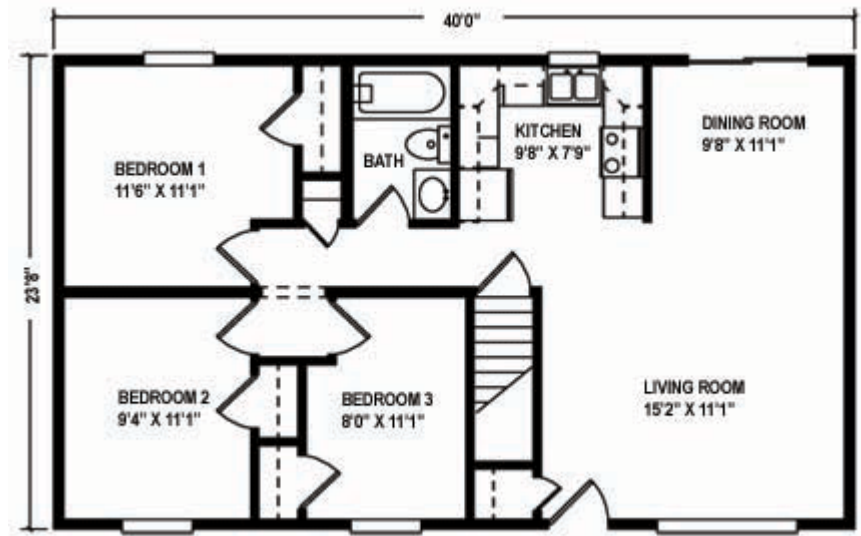


## The Columbia

Plan No. 143 946 Sq. Ft

Everyone's a winner with this home that features three bedrooms, a dining room and large living room make this the ideal starter home.

Also available in 26' and 27'6" width.

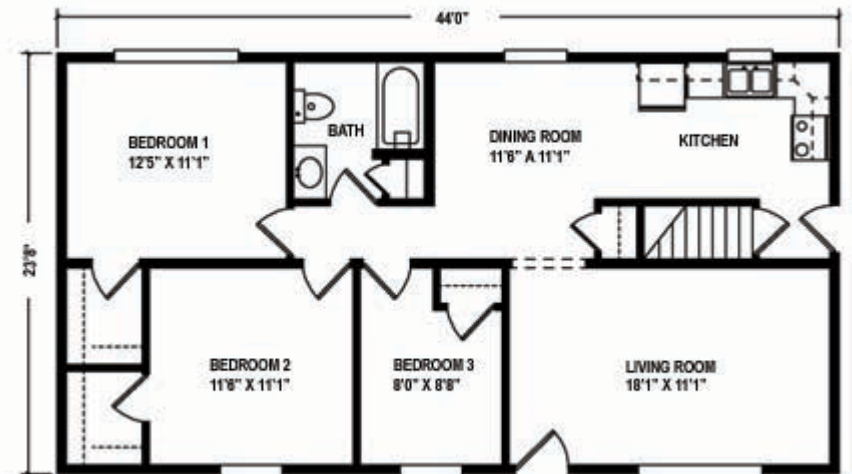


## The Franklin

Plan No. 144 1041 Sq. Ft

Enjoy comfortable living with three bedrooms with walk-in closets, large bath, and spacious living room, dining area and kitchen.

Also available in 26' and 27'6" width.

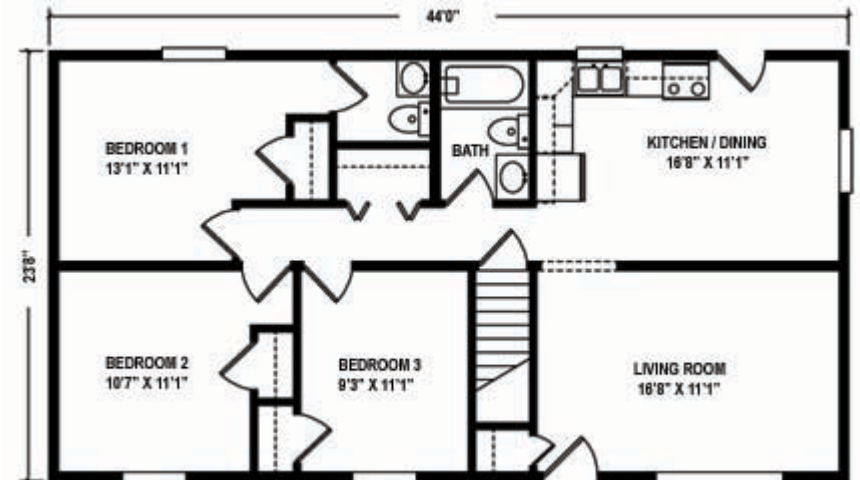


## The Lehigh

Plan No. 145 1041 Sq. Ft

Space and privacy with master bedroom suite with private bath, plus two additional bedrooms with an additional bathroom.

Also available in 26' and 27'6" width.

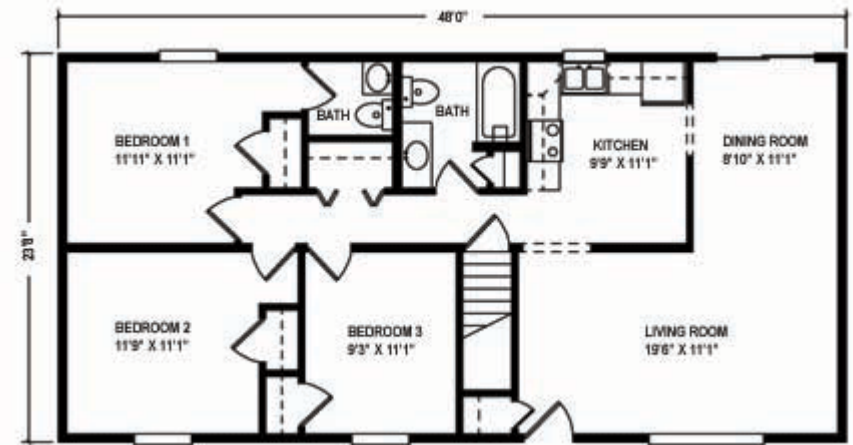


## The Monroe

Plan No. 146 1136 Sq. Ft

Generous space for family or visitors. Master bedroom suite with private bath, plus two additional bedrooms and a full bath.

Also available in 26' and 27'6" width.

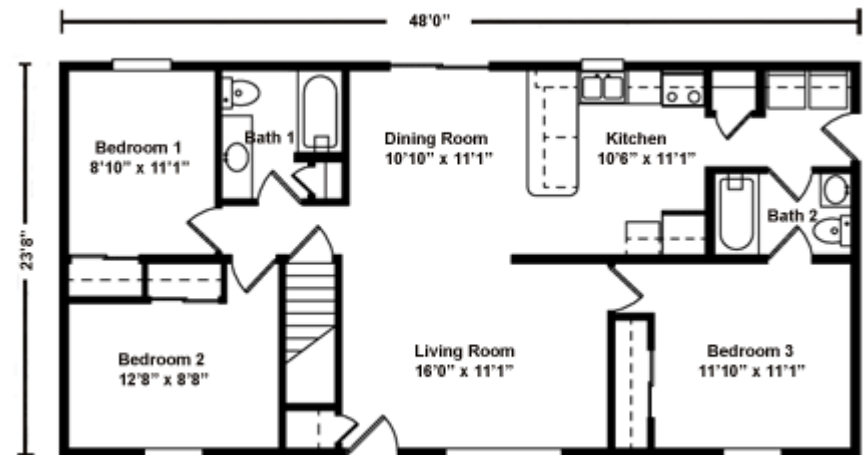


## The Sullivan

Plan No. 147 1136 Sq. Ft

Spacious kitchen with convenient adjoining utility room, plus spacious dining room and living room perfectly complement your casual lifestyle or formal entertaining.

Also available in 26' and 27'6" width.



## The Tioga

**Plan No. 148 1230 Sq. Ft**

Formal living room and dining room are perfect for relaxing with the family or entertaining guests.

Also available in 26' and 27'6" width.



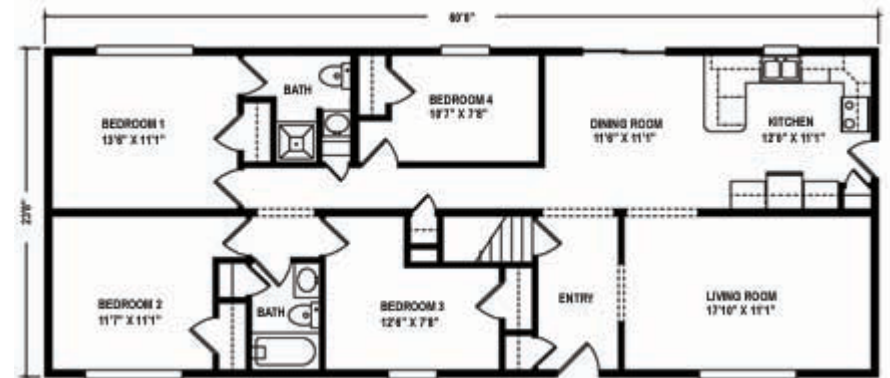


## The Wyoming

Plan No. 149 1420 Sq. Ft

Cozy and comfortable best describe this four bedroom ranch with welcoming foyer, living room, dining room and 1 3/4 baths.

Also available in 26' and 27'6" width.

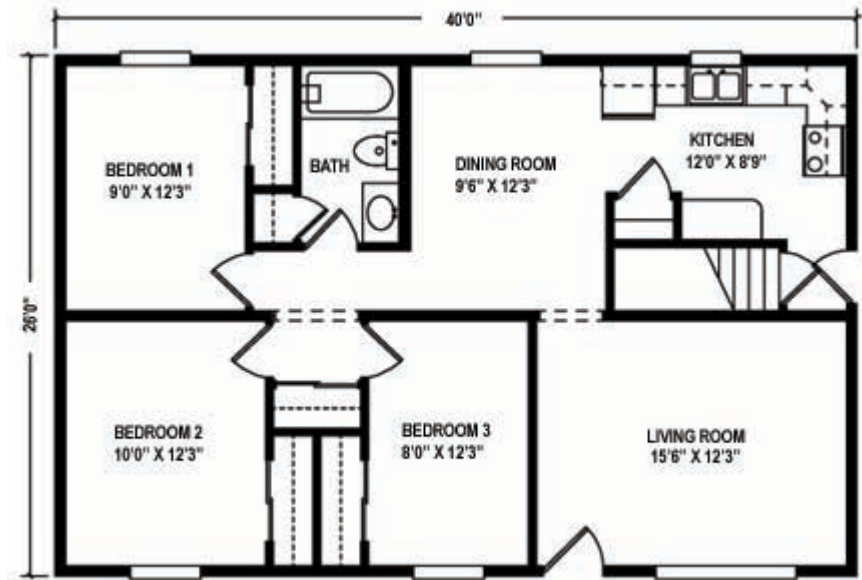


## The Allegheny

Plan No. 261 1040 Sq. Ft

A charming home design featuring three large bedrooms with generous closet space.

Also available in 27'6" width.

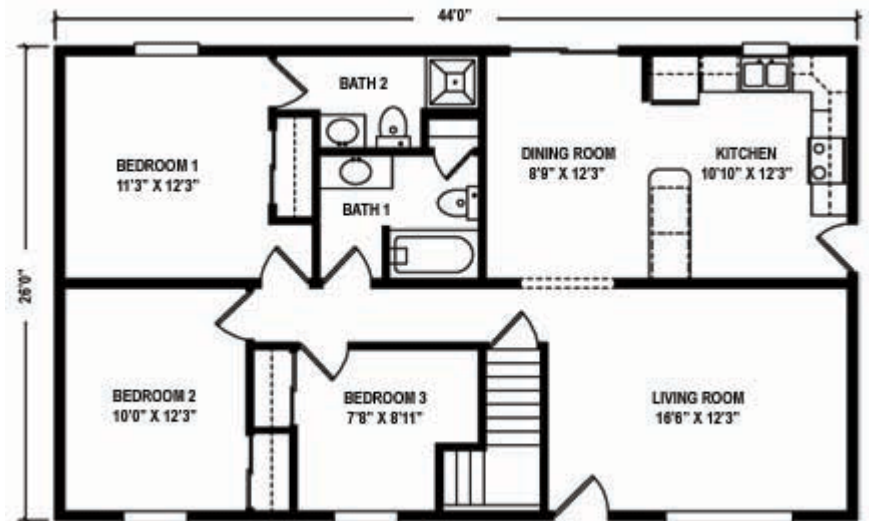


## The Clarion

Plan No. 262 1144 Sq. Ft

Traditional styling with an efficient layout makes this three bedroom, 1 3/4 bath ranch a classic.

Also available in 27'6" width.

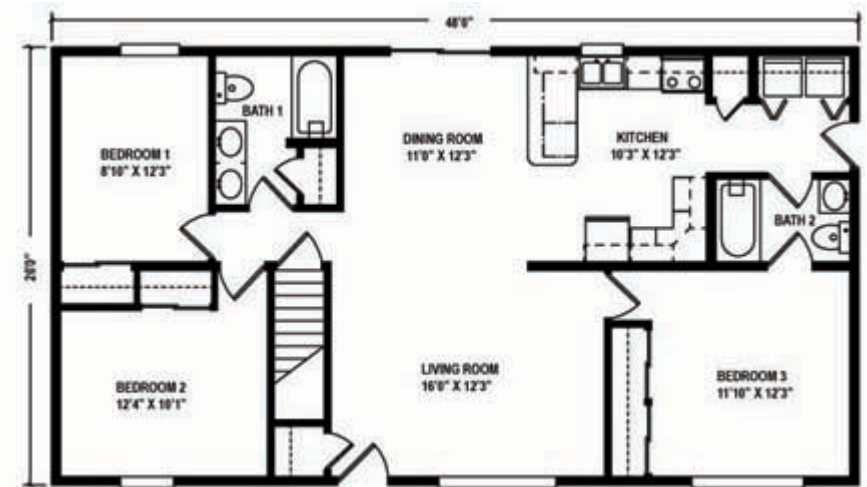


## The Delaware

Plan No. 263 1248 Sq. Ft

Relax in style in this home featuring master bedroom with a private bath, convenient utility room and spacious kitchen.

Also available in 27'6" width.

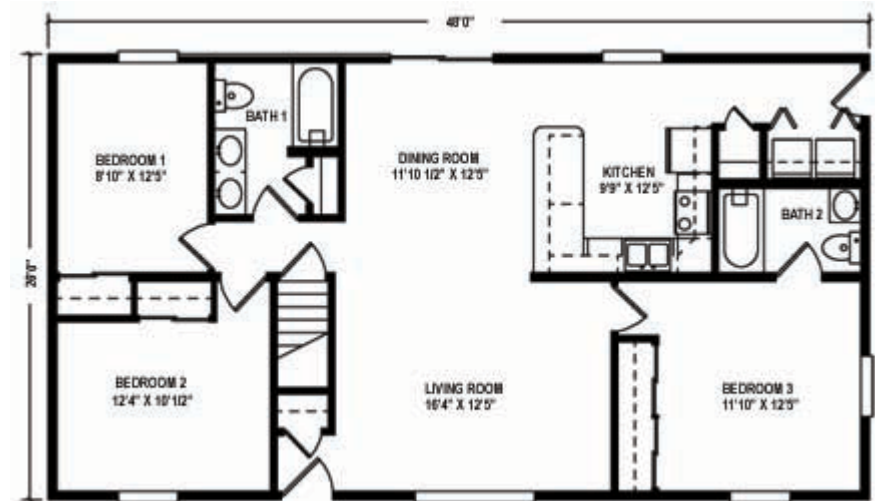


## The Juniata

Plan No. 264 1248 Sq. Ft

A well balanced exterior is just the beginning, as this plan's interior design flows smoothly with a central living area and a secluded master bedroom.

Also available in 27'6" width.

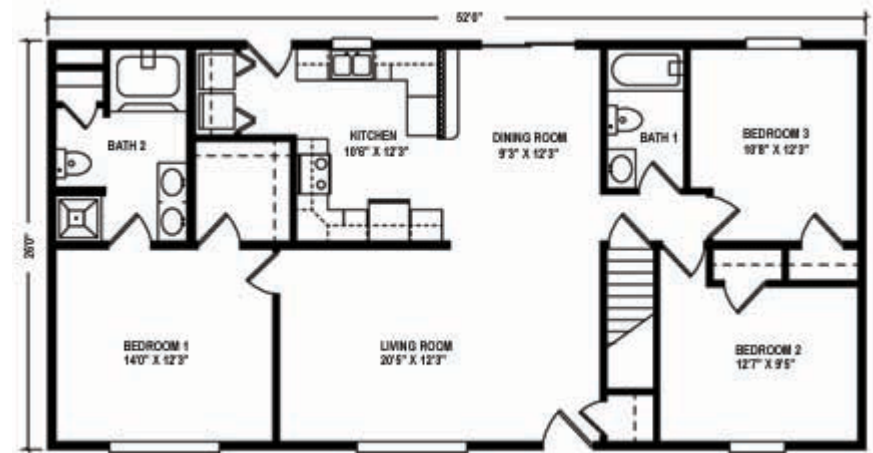


## The Ohio

**Plan No. 265 1352 Sq. Ft**

Space for living and relaxing with large master bedroom suite with adjoining bath. Utility area off of the kitchen and expansive formal living room.

Also available in 27'6" width.



## The Schuylkill

**Plan No. 266 1352 Sq. Ft**

Comfortable, easy living with spacious kitchen and adjoining utility room, master bedroom suite with a private bath, plus two bedrooms and an additional bath.

Also available in 27'6" width.

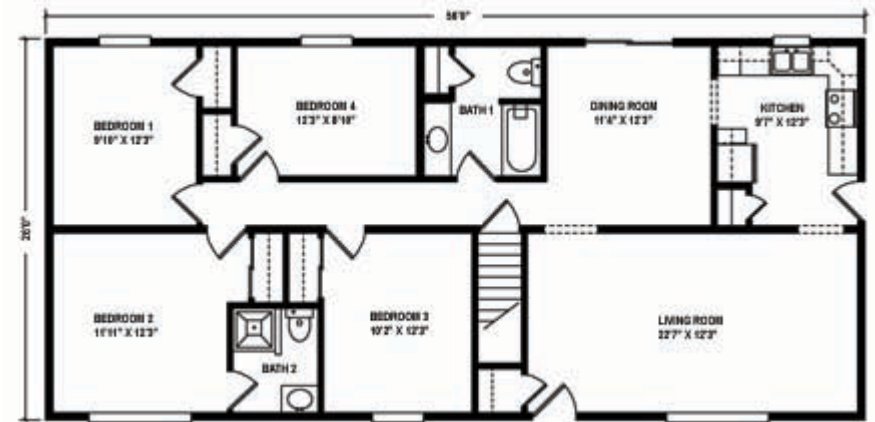


## The Shenango

Plan No.267 1456 Sq. Ft

Master bedroom with adjoining three-quarter bath, two additional bedrooms, full bath, large kitchen and a formal dining room are just a few of the features of this dynamic design.

Also available in 27'6" width.



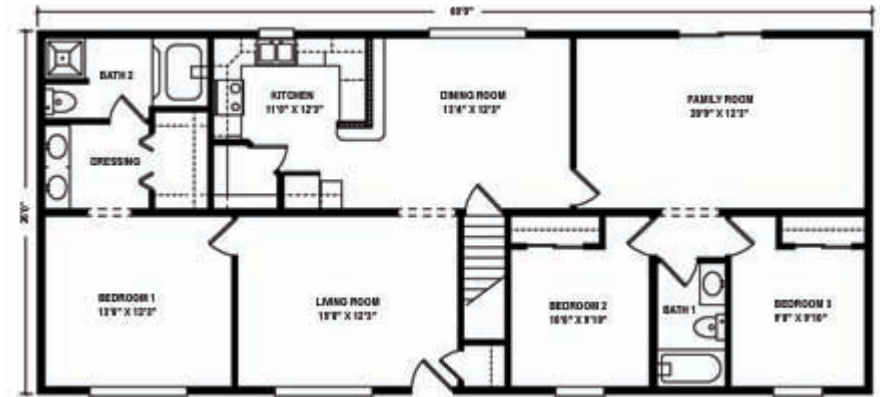


## The Susquehanna

Plan No. 268 1560 Sq. Ft

Spacious family living features grand master bedroom suite with walk-in closet and luxurious bath, Spacious family room makes this home perfect for the family who enjoys additional space.

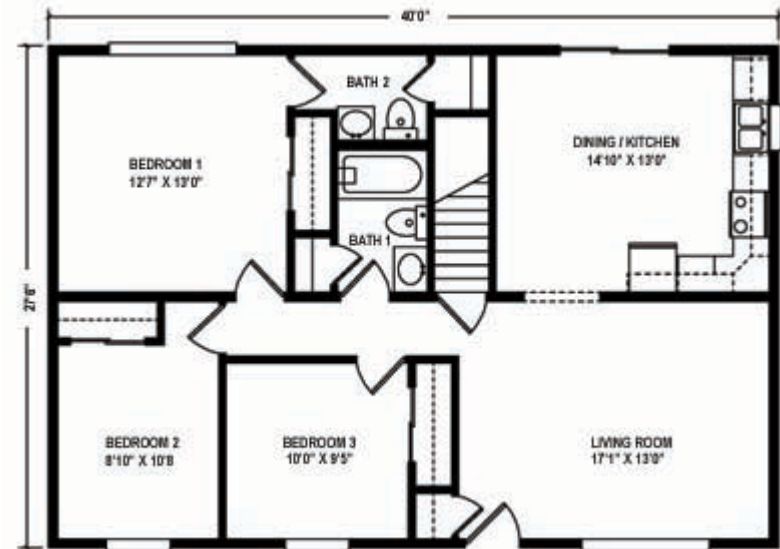
Also available in 27'6" width.



## The Bedford

**Plan No. 382 1100 Sq. Ft**

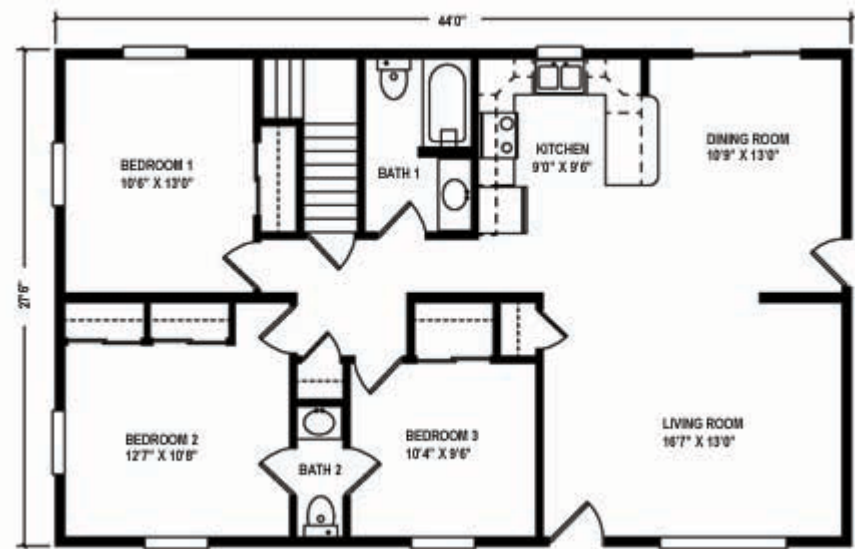
A perfect starter or move down home featuring three bedrooms, full bath with half bath off of the master bedroom and large kitchen/dining area.



## The Canton

Plan No. 383 1210 Sq. Ft

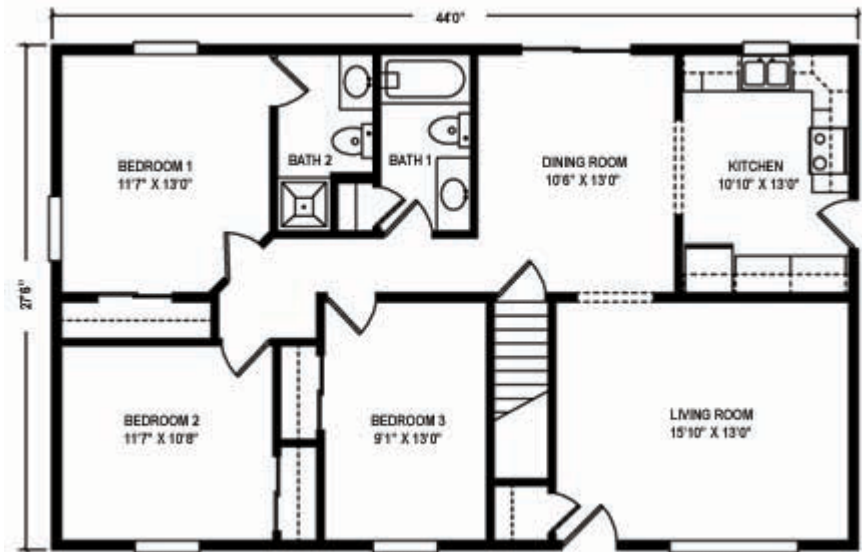
Special features of this design include one and one half baths with access to half bath from two bedrooms and a wide open area between kitchen, dining and living room.



## The Erie

Plan No. 384 1210 Sq. Ft

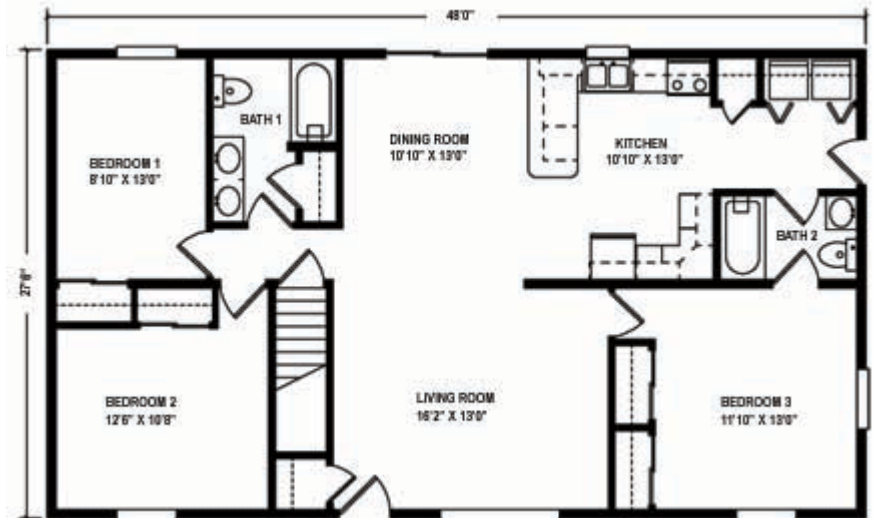
Featuring master bedroom suite with adjoining three quarter bath, two additional bedrooms, a full bath and a formal dining room.



## The Greensburg

Plan No. 385 1320 Sq. Ft

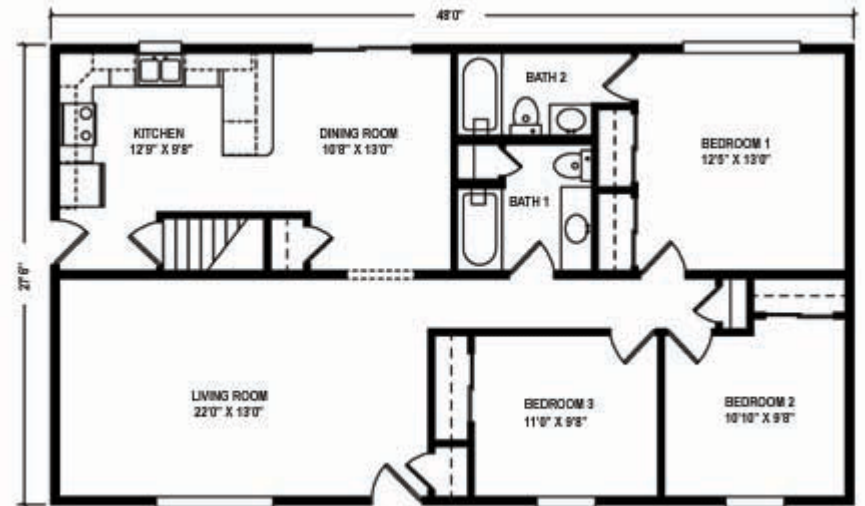
Spacious and welcoming, featuring kitchen with breakfast/snack bar and convenient utility closet, master bedroom with a full bath.



## The Kingston

Plan No. 386 1320 Sq. Ft

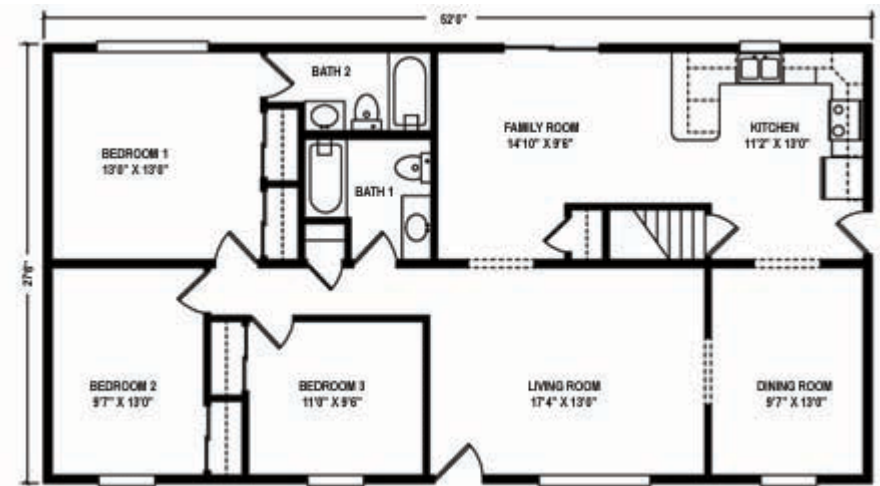
Special features of this design include master bedroom with his and hers closets and full bath, spacious living room, kitchen, dining area with snack bar.



## The Reading

Plan No. 387 1430 Sq. Ft

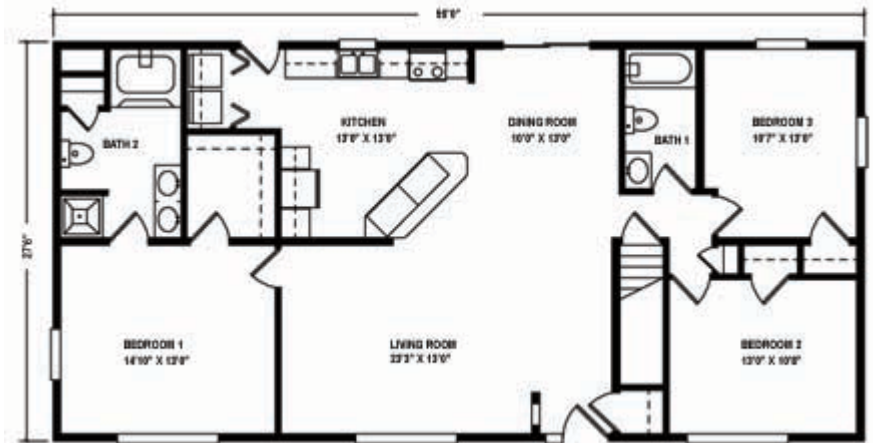
Family stlye living with master bedroom and adjoining full bath and his and hers closets, two additional bedrooms, full bath, large family room, and kitchen with breakfast/snack bar.



## The Scottsdale

Plan No. 388 1540 Sq. Ft

Enjoy exceptional living with grand master bedroom suite with generous walk-in closet and luxurious, private bath; spacious, formal living room, and large kitchen with breakfast/snack area.

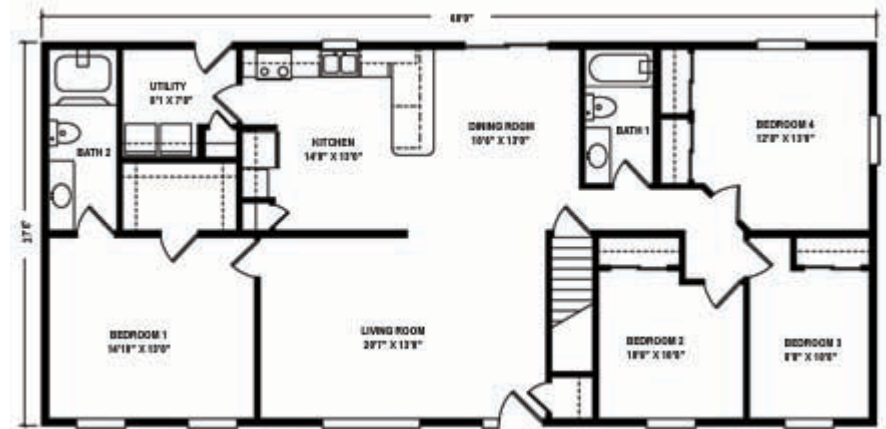




## The Scranton

Plan No. 389 1650 Sq. Ft

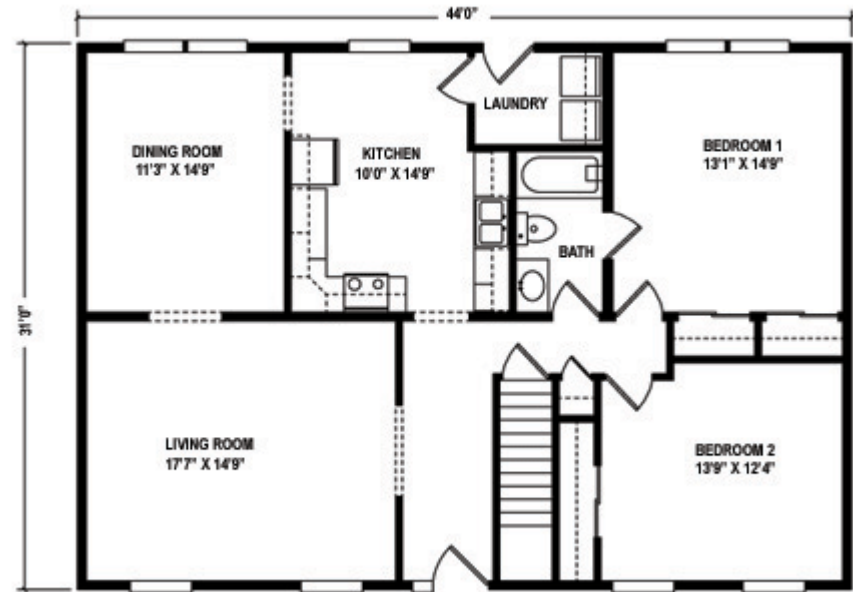
A home for the larger family with master bedroom with full bath, three additional bedrooms, full bath, convenient utility area, large kitchen with L bar.



## Plan 704

1364 Sq. Ft

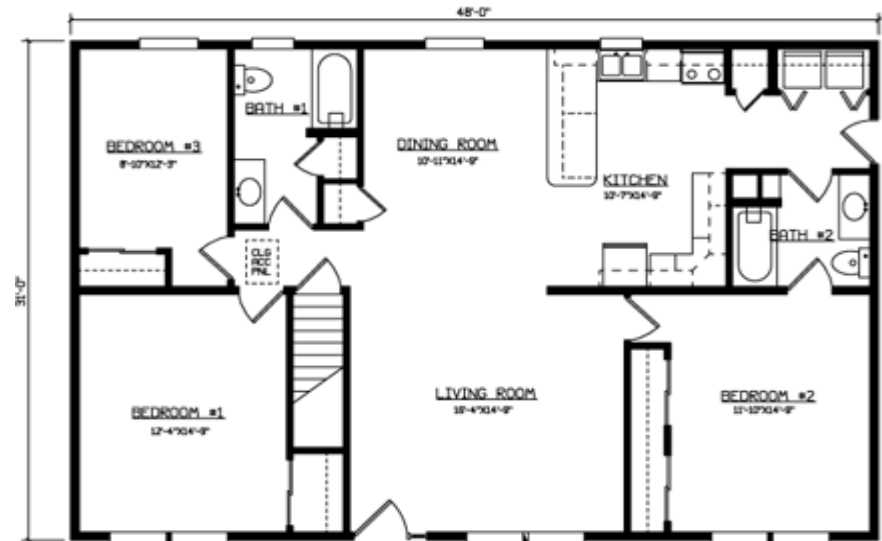
Enjoy comfortable living with two bedrooms, a formal living and dining room, spacious kitchen, laundry room and an inviting foyer. A perfect starter home.



## Plan 708

1488 Sq. Ft

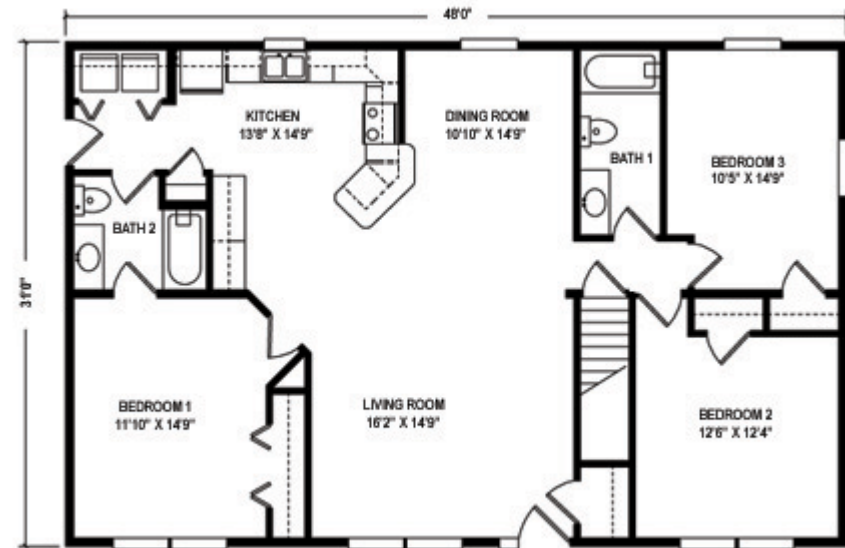
Everyone's a winner with this home. Three bedrooms, a dining room and a large living room make this an ideal starter home.



## Plan 710

1488 Sq. Ft

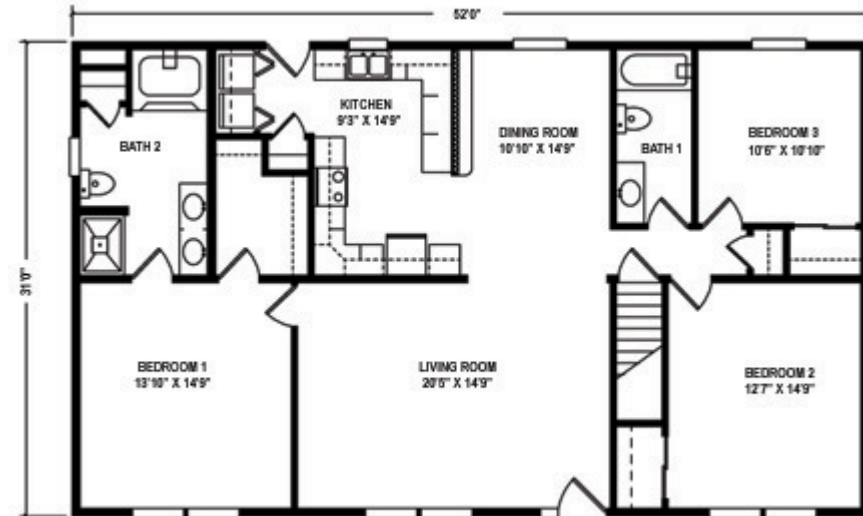
Spacious living room, open dining room, two full baths, and three bedrooms make this the perfect home for families who enjoy open living.



## Plan 715

1612 Sq. Ft

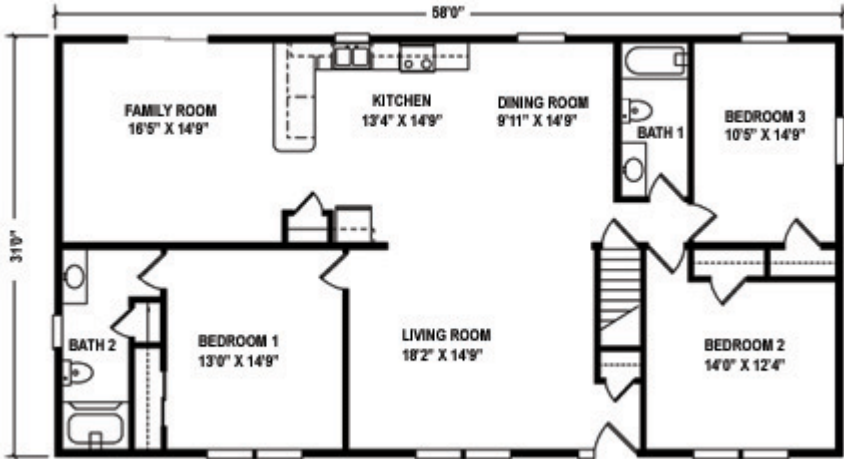
Traditional styling with an efficient layout makes this three bedroom, two bath ranch a classic.



# Plan 725

1798 Sq. Ft

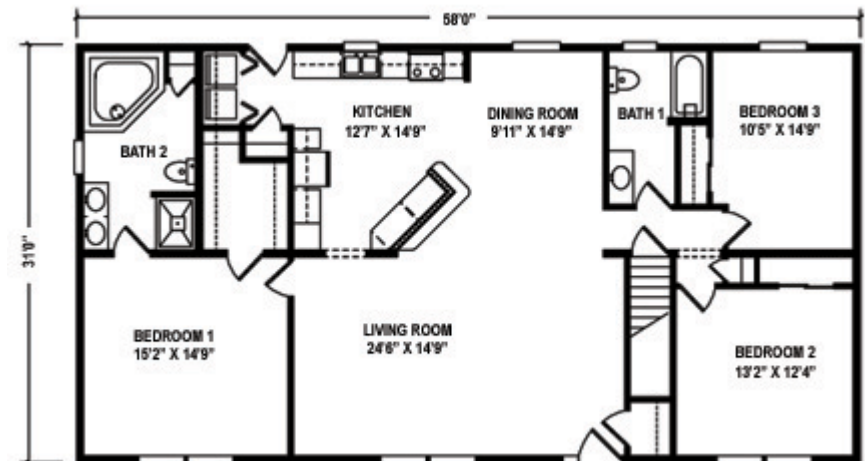
Spacious family living with four bedrooms, two full baths, a large family room and an open living and dining room. Truly a perfect home for the family who enjoys additional space.



## Plan 726

1798 Sq. Ft

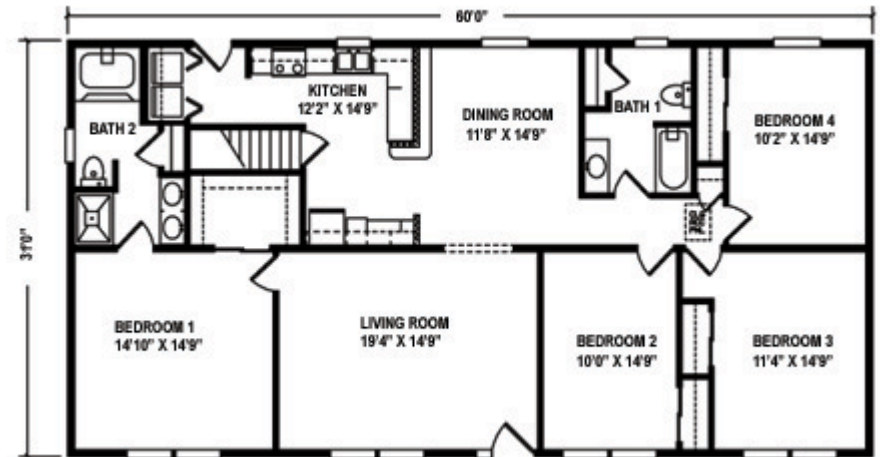
Enjoy exceptional living with grand master bedroom suite offering a generous walk-in closet and luxurious private bath; spacious formal living room, and large kitchen with breakfast / snack bar.



## Plan 730

1860 Sq. Ft

This four-bedroom plan features a luxurious master bath and a spacious kitchen / dining area. Perfect for the family that desires space and convenience.





## Plan 770

2139 Sq. Ft

This T-Ranch features three bedrooms, two full baths, walk-in closet, a formal living room, a laundry area with a half-bath and a very functional kitchen. An inviting entry foyer welcomes you to a home for all families

