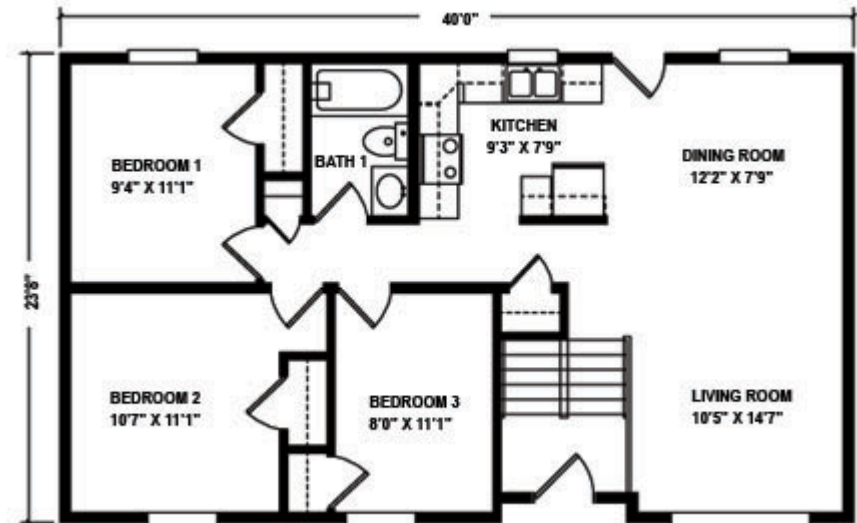


The Hanover

Plan No. 106 946 Sq. Ft

A design that accentuates space. Open living room and dining room area offers expansive living space. Three large bedrooms with ample closet space and full bath provide comfortable, private surroundings.

Also available in 26' width.

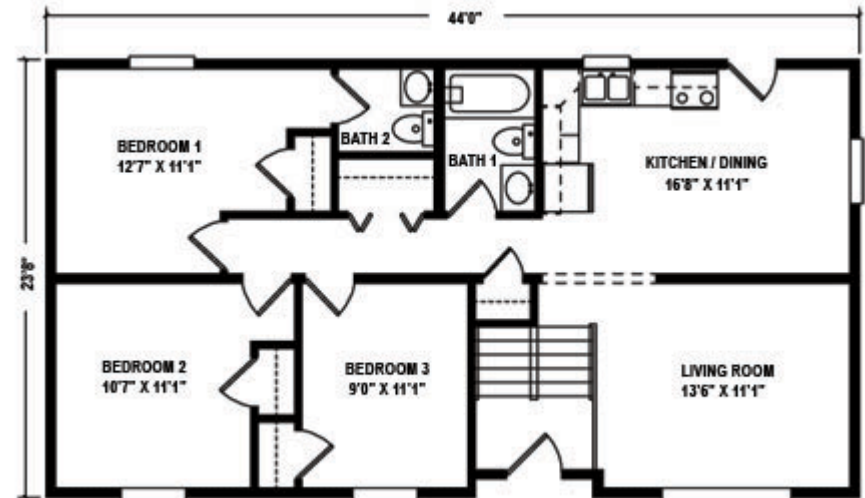


The Grafton

Plan No. 111 1,041 Sq. Ft

Ideal for the family who values privacy. Three bedrooms with generous closet space, one and a half baths are located at a discrete distance from the living room.

Also available in 26' width.

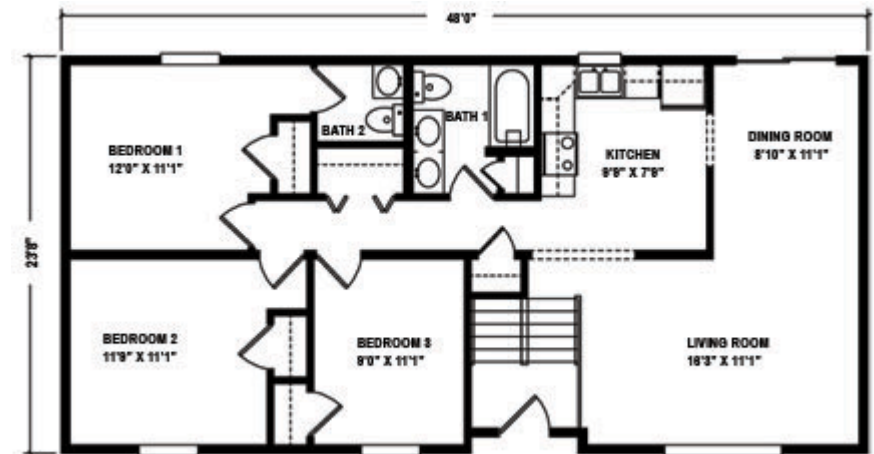


The Lincoln

Plan No. 113 1,136 Sq. Ft

Comfort and convenience are yours with master bedroom suite with private bath, two additional bedrooms, large bath, utility closet, spacious kitchen and "L" shaped living room and dining area.

Also available in 26' width.

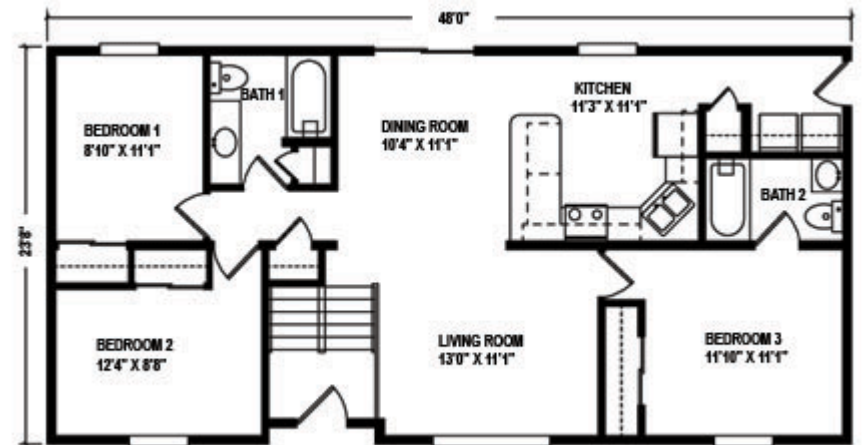


The Cranston

Plan No. 118 1,136 Sq. Ft

A unique floor plan offers space and privacy. Master bedroom suite with private bath is nestled away from two additional bedrooms and full bath.

Also available in 26' width.

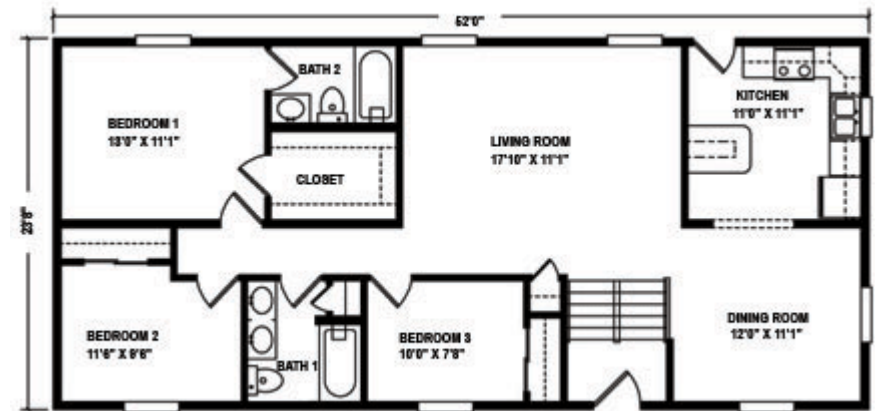


The Shiloh

Plan No. 119 1,231 Sq. Ft

Expansive open living room, creates an impressive "great room". Master bedroom suite with private bath, two additional spacious bedrooms and a full bath offer comfortable living.

Also available in 26' width.

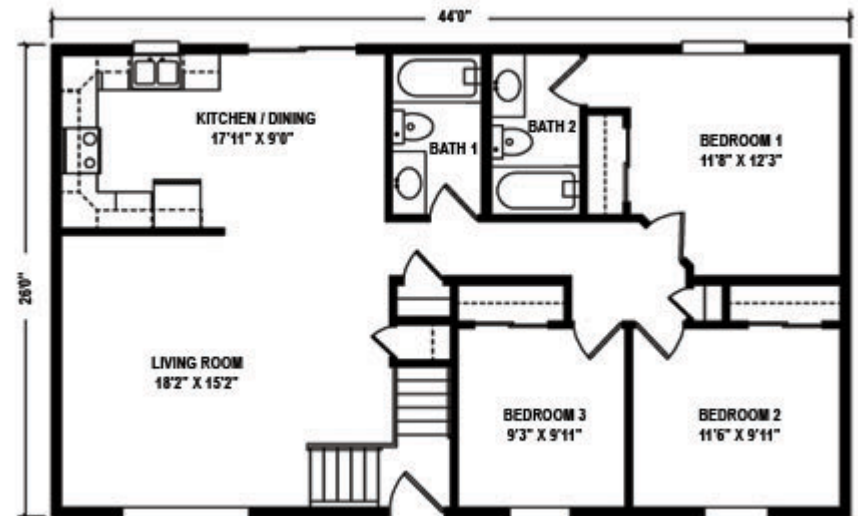


The Herndon

Plan No. 217 1,144 Sq. Ft

Perfect for family living with master bedroom suite with private bath and large closet plus two additional bedrooms and full bath.

Also available in 27'6" width.

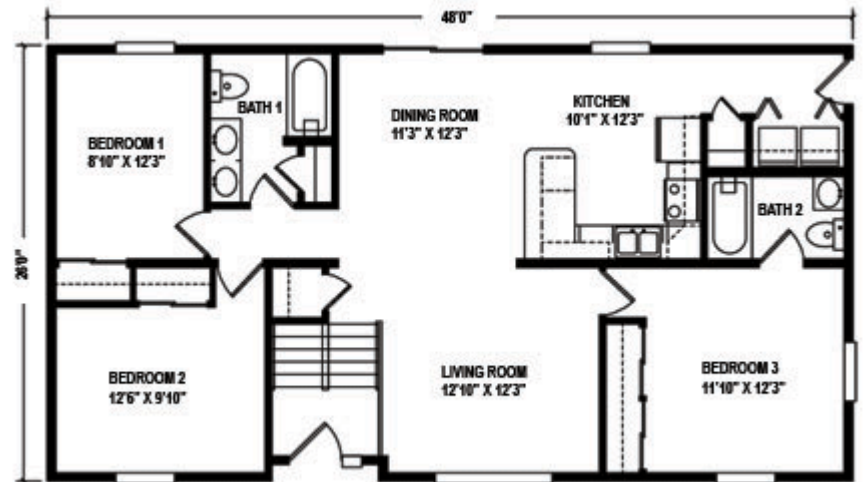


The Millville

Plan No. 225 1,248 Sq. Ft

Comfort and convenience are yours with master bedroom suite with his and hers closets and private bath, two additional bedrooms, large bath, utility closet, kitchen with snack bar, and dining area.

Also available in 27'6" width.

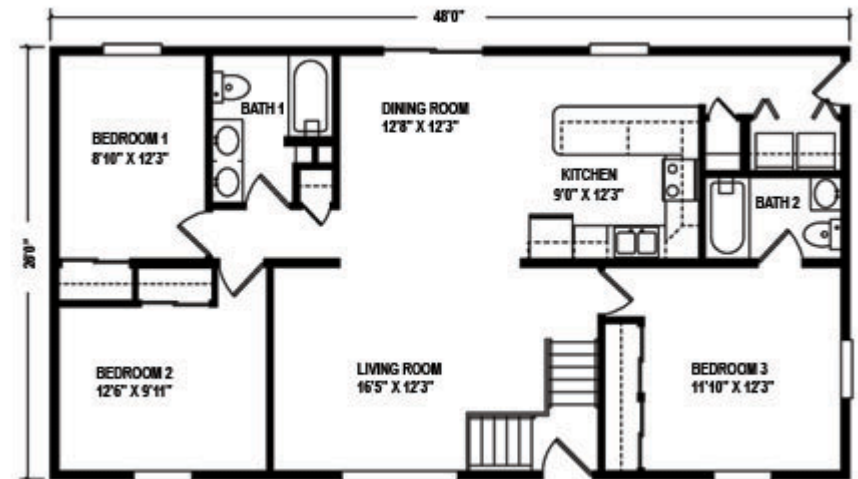


The Oreland

Plan No. 260 1,248 Sq. Ft

Master bedroom suite with private bath and large closet plus two additional bedrooms and full bath provide space and privacy. Unique kitchen layout offers convenience.

Also available in 27'6" width.

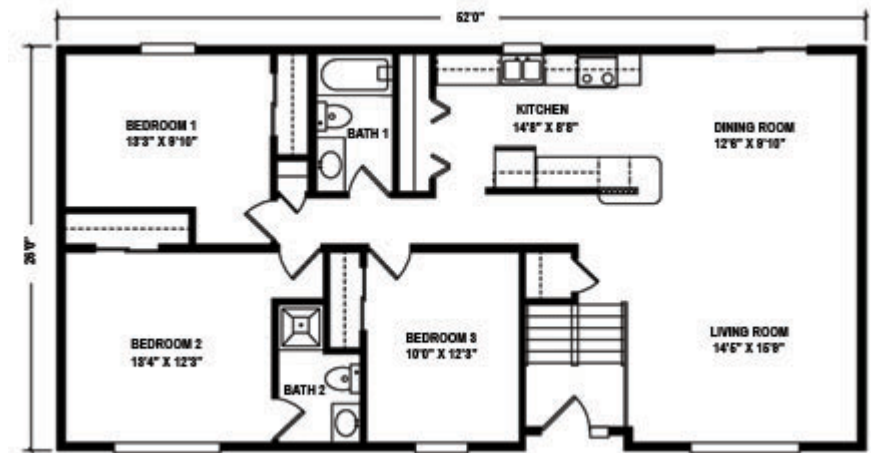


The Hillsville

Plan No. 218 1,352 Sq. Ft

An innovative design that presents endless options with great living space created by spacious, open kitchen, dining room and living room area. Three bedrooms and one and three quarter baths.

Also available in 27'6" width.

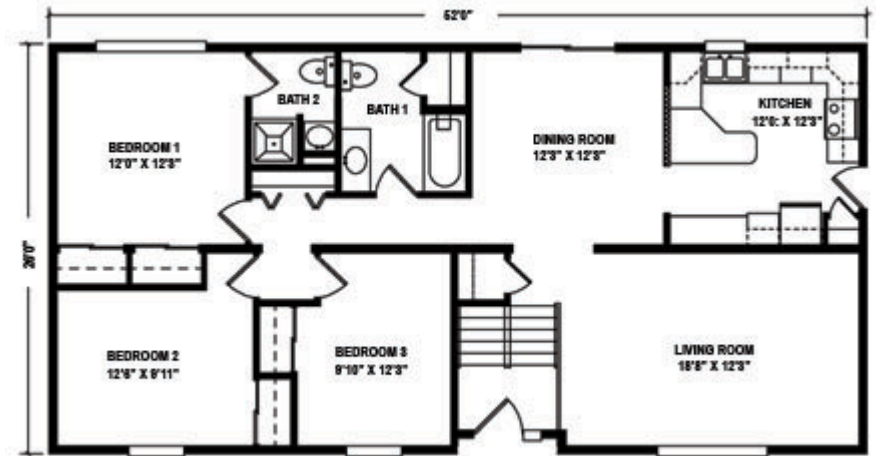


The Richmond

Plan No. 219 1,352 Sq. Ft

Perfect for family living with master bedroom suite with private bath and large closets plus two additional bedrooms and full bath.

Also available in 27'6" width.



The Salona

Plan No. 216 1,404 Sq. Ft

Master bedroom suite with private bath and large closet plus two additional bedrooms and full bath provide space and privacy. Unique kitchen layout with snack bar offers convenience.

Also available in 27'6" width.

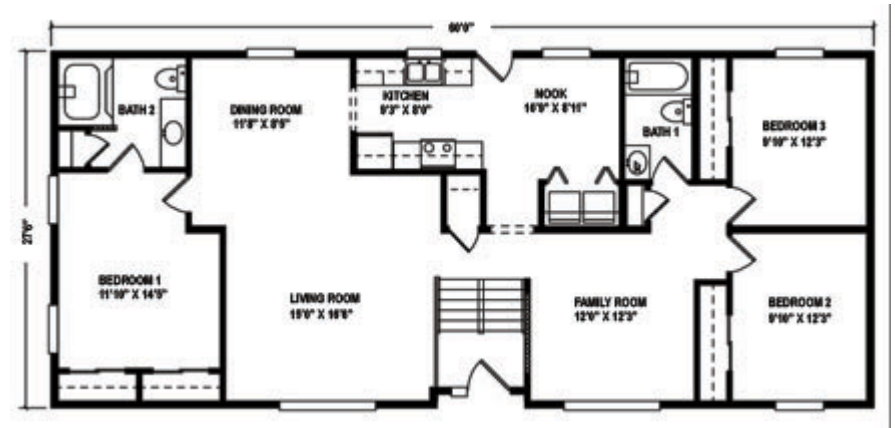


The Woldale

Plan No. 221 1,560 Sq. Ft

Relax in charming comfort featuring cozy breakfast nook and large kitchen, plus master bedroom suite with private bath, plus two additional bedrooms and full bath.

Also available in 27'6" width.



The Elkland

Plan No. 323 1,210 Sq. Ft

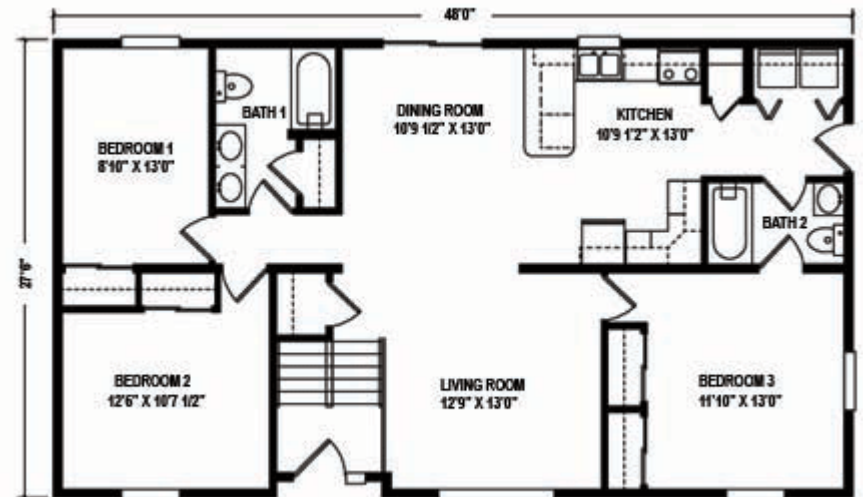
Formal living and dining room play perfect hosts to guests. Master bedroom suite with private bath, plus two additional bedrooms and full bath.



The Danville

Plan No. 316 1,320 Sq. Ft

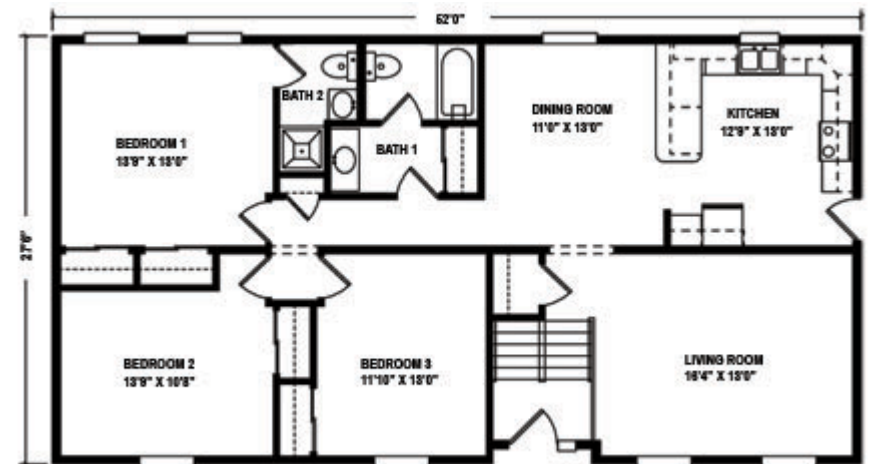
Master bedroom suite with private bath and large closet plus two additional bedrooms and full bath provide space and privacy. Unique kitchen layout with full utility closet offers convenience.



The Brenton

Plan No. 311 1,430 Sq. Ft

Perfect for family living with master bedroom suite with private bath and large closet plus two additional bedrooms and full bath.



The Donora

Plan No. 331 1,540 Sq. Ft

Spacious living/great room welcomes you. Large master suite with private bath and walk-in closet. Plus two additional bedrooms and full bath.



The Whitney

Plan No. 333 1,705 Sq. Ft

Stunning family room is hallmark of this creative home that also features a large kitchen with walk-in pantry closet. Spacious master suite with lavish private bath, plus two additional bedrooms and full bath.

