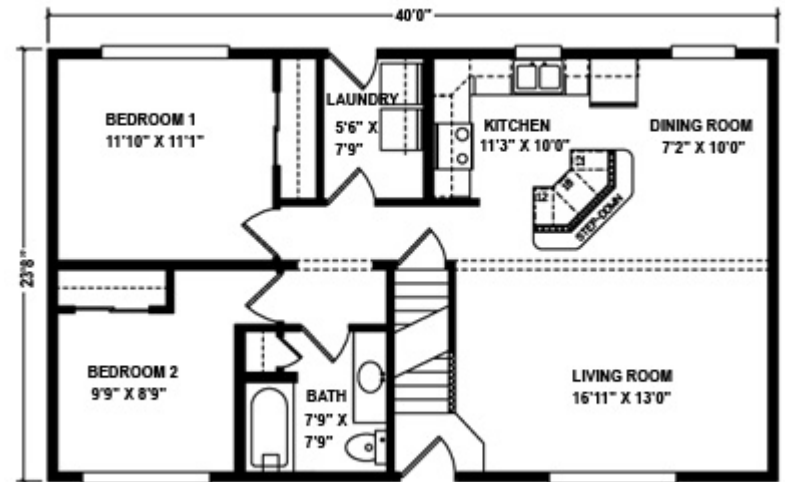


## Cape Camden

Plan No. 105 946 Sq. Ft

The Quaint design of spacious comfort with two bedrooms, full bath, large kitchen / dining area and generous living room.

Also available in 26' width

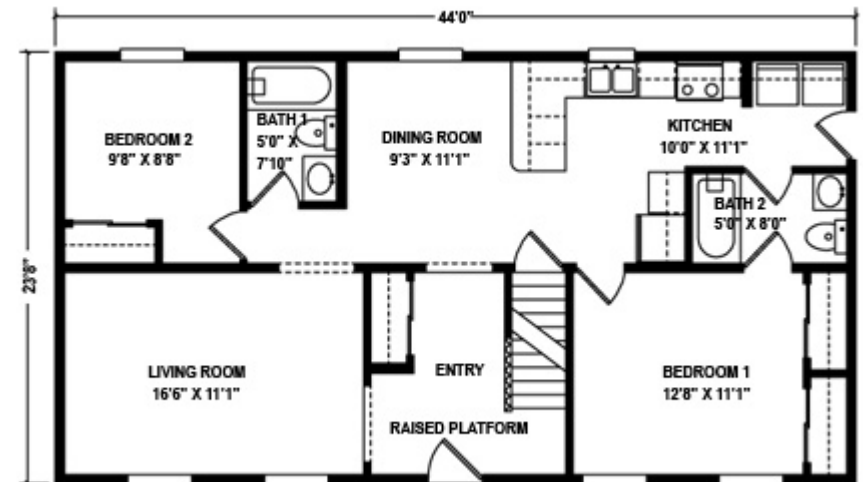


## Cape Auburn

Plan No. 107 1,041 Sq. Ft

Distinctive living with immense living room opening into formal dining room and expansive kitchen with island. Two spacious bedrooms with ample closet space and two full baths.

Also available in 26' width

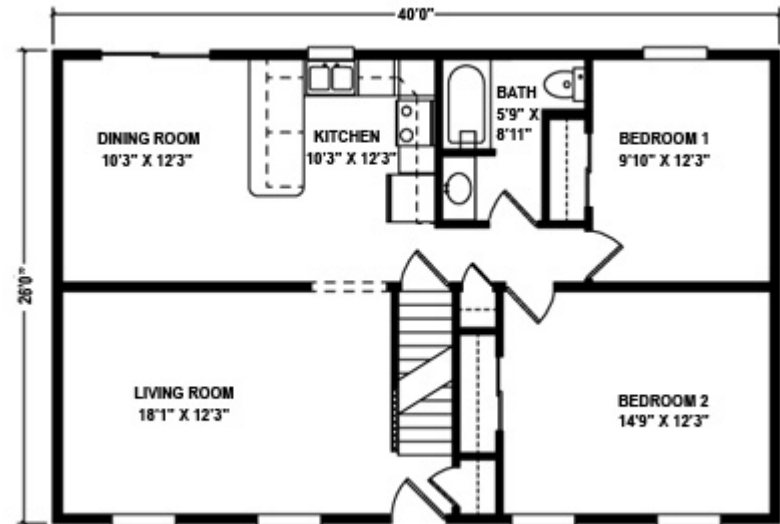


## Cape Cod

### Plan No. 231 1,040 Sq. Ft

Featuring a grand living room and open kitchen and dining room area, this cape offers tremendous space. Two large bedrooms and generous bath perfectly accommodates family or guests.

Also available in 26' width

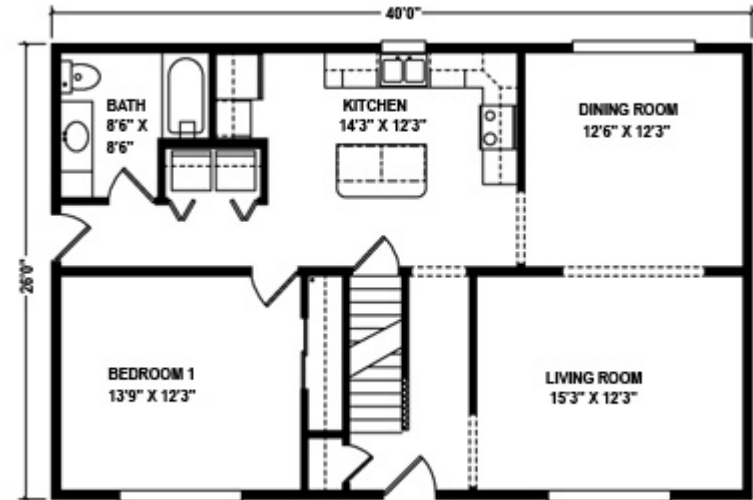


## Cape Chester

Plan No. 232 1,040 Sq. Ft

Cozy and comfortable best describe this cape with welcoming foyer, living room, dining room and spacious kitchen.

Also available in 27' 6" width

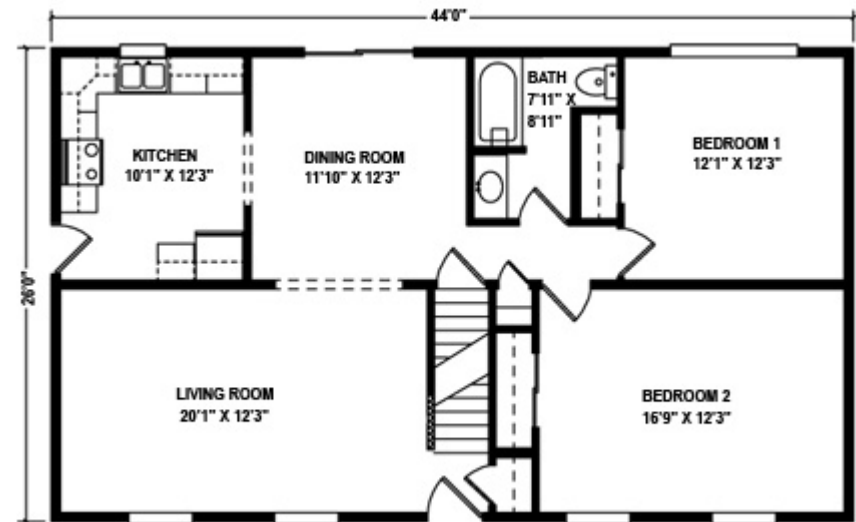


## Cape Hatteras

Plan No. 233 1,144 Sq. Ft

The expansive space of this home is perfect for family living with two large bedrooms, full bath, spacious living room and large dining room.

Also available in 27' 6" width

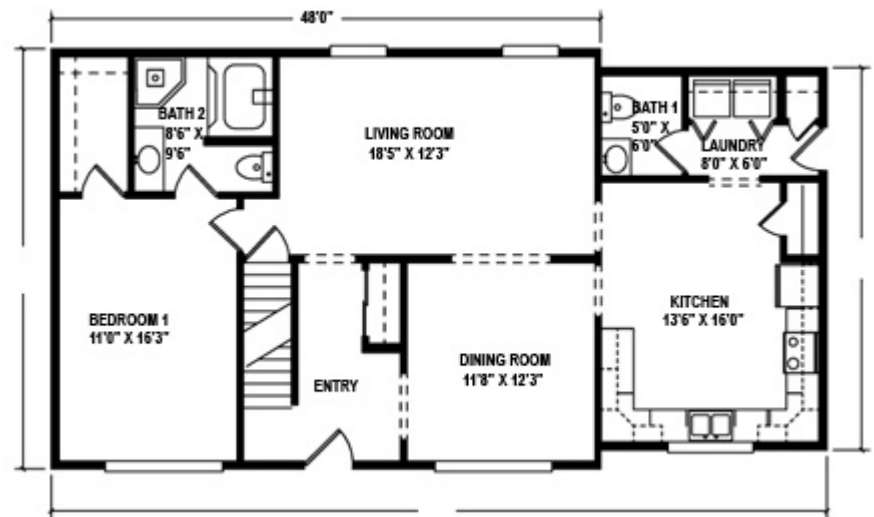


## Cape Preston

**Plan No. 234 1,214 Sq. Ft**

A warm, spacious kitchen with adjoining utility room and half bath is the centerpiece of this magnificent home featuring formal living room and dining room, grand entrance foyer and master bedroom suite with luxurious bath and walk-in closet.

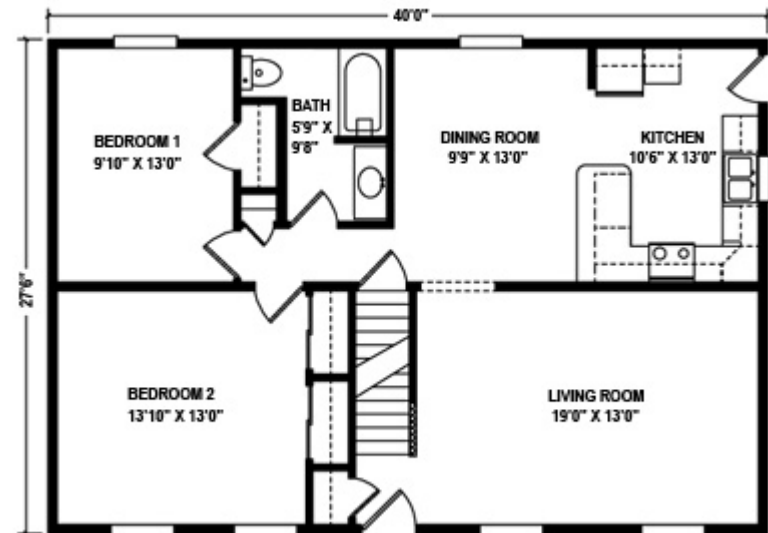
Also available in 27' 6" width



## Cape May

Plan No. 309 1,100Sq. Ft

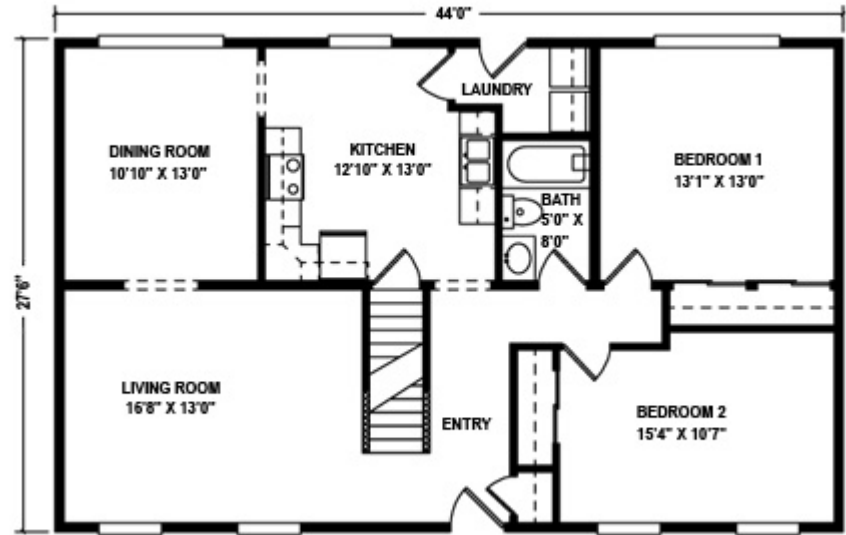
A charming home with features you'll love. Two bedrooms, full bath, formal living room, and delightful kitchen.



## Cape Charles

Plan No. 317 1,210Sq. Ft

Expansive space of this home is perfect for family entertaining and living with formal living room and dining room, spacious kitchen, two bedrooms, and full bath.

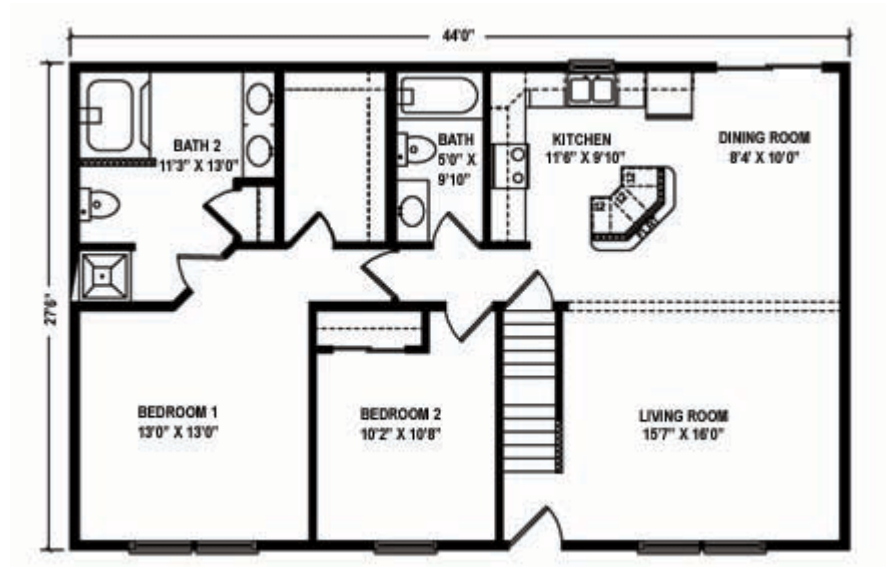




## Cape Bristol

Plan No. 344 1,210 Sq. Ft

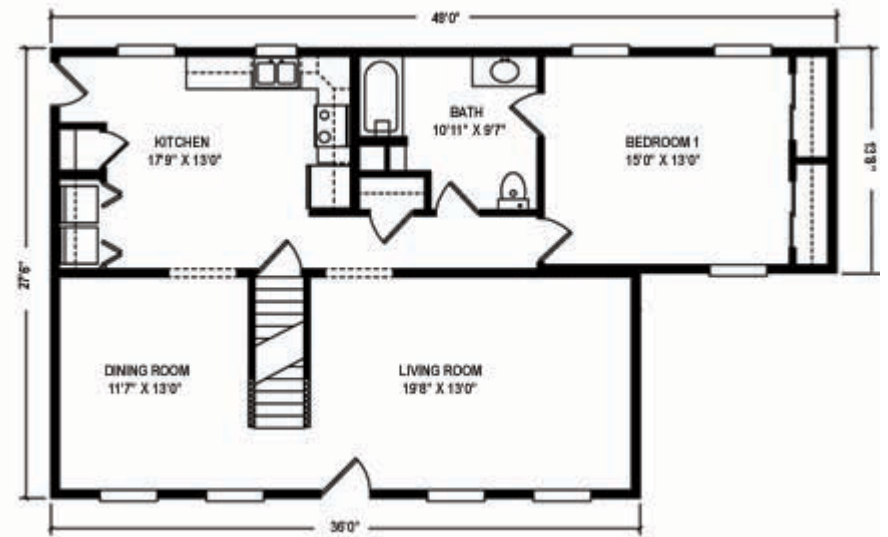
Relax in privacy and space with master bedroom suite featuring full bath and walk-in closet, additional bedroom, full bath and comfortable kitchen



## Cape Kennedy

**Plan No. 340 1,105Sq. Ft**

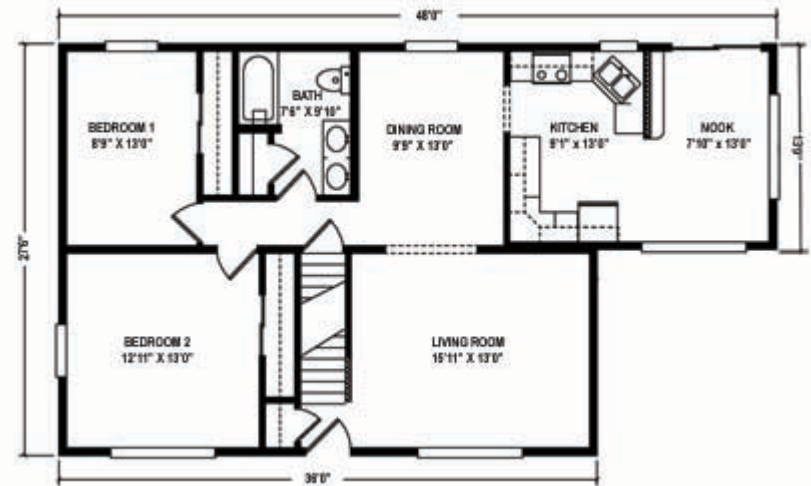
Master bedroom with adjoining spacious bath offer private seclusion from living area that features expansive living room, formal dining room and large kitchen with convenient utility closet.



## Cape Barrow

Plan No. 341 1,105 Sq. Ft

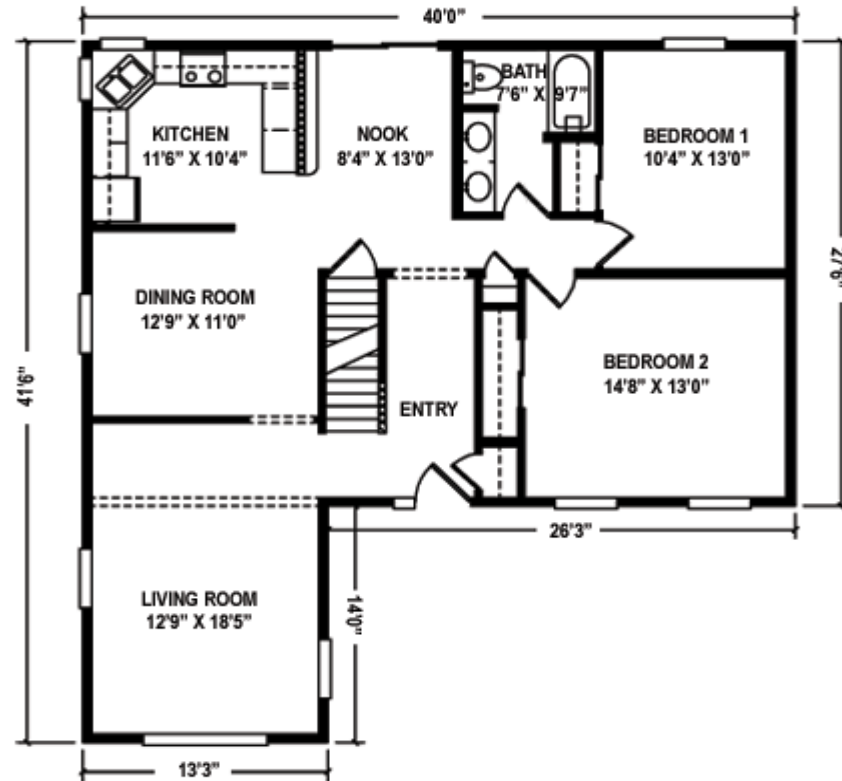
A charming home with features you'll love. Two large bedrooms, full bath, formal living room and dining room, kitchen with delightful, sunny breakfast nook.



## Cape Henry

Plan No. 342 1,306 Sq. Ft

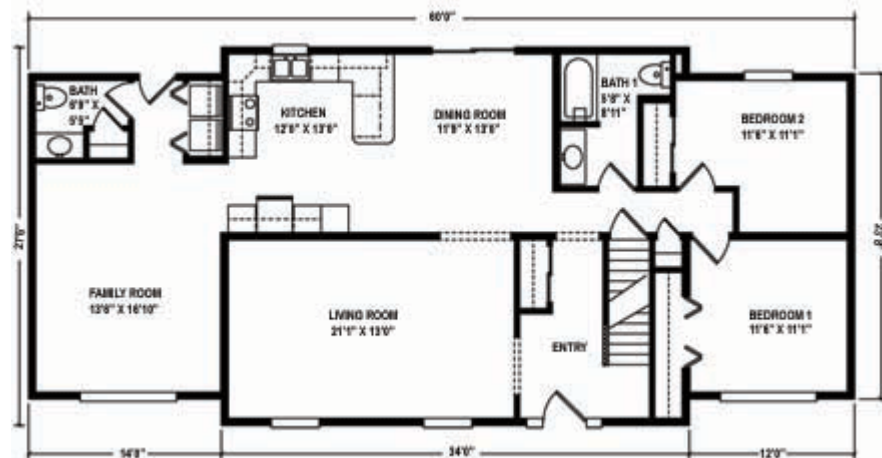
Formal living with this L cape you'll love. Two bedrooms, formal dining and living toom, the entrance foyer welcomes you to comfortable living.



## Cape Arlington

Plan No. 343 1,576 Sq. Ft

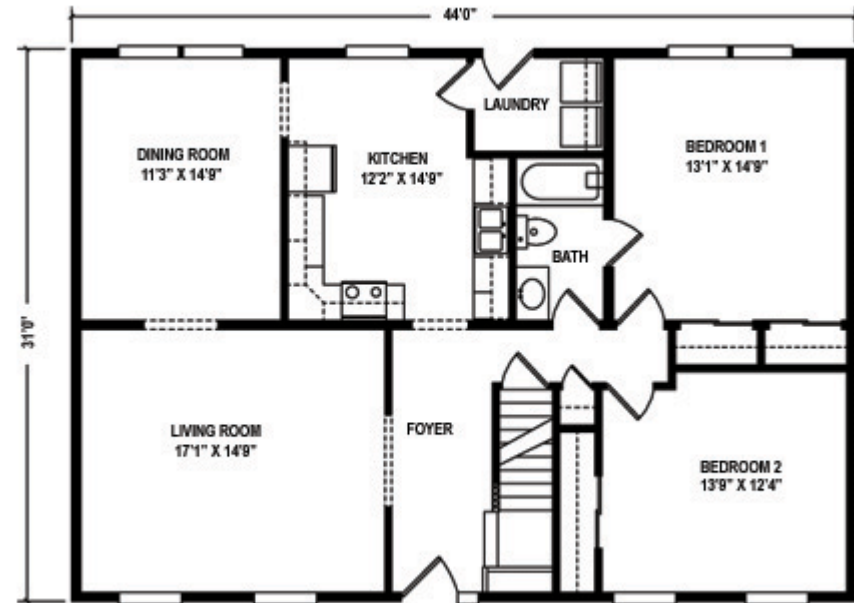
An innovative design creates unique living space featuring two bedrooms, formal living room, spacious kitchen, dining room, dramatic foyer, family room and one and a half baths with utility room makes this plan a winner.



## Highland - Plan 750

1364 Sq. Ft

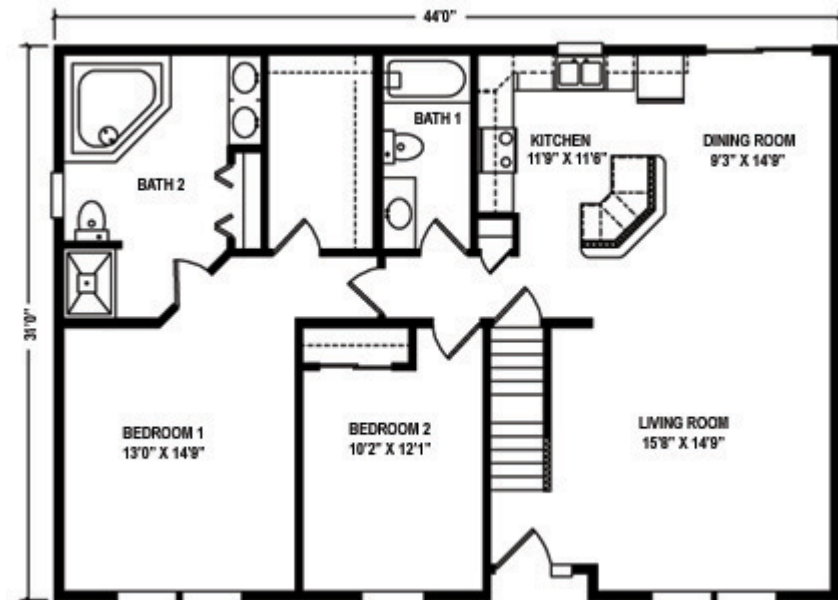
A charming home with features you'll love. Two large bedrooms, formal living and dining rooms, a spacious kitchen and an inviting foyer make this home a winner.



## Highland - Plan 751

1364 Sq. Ft

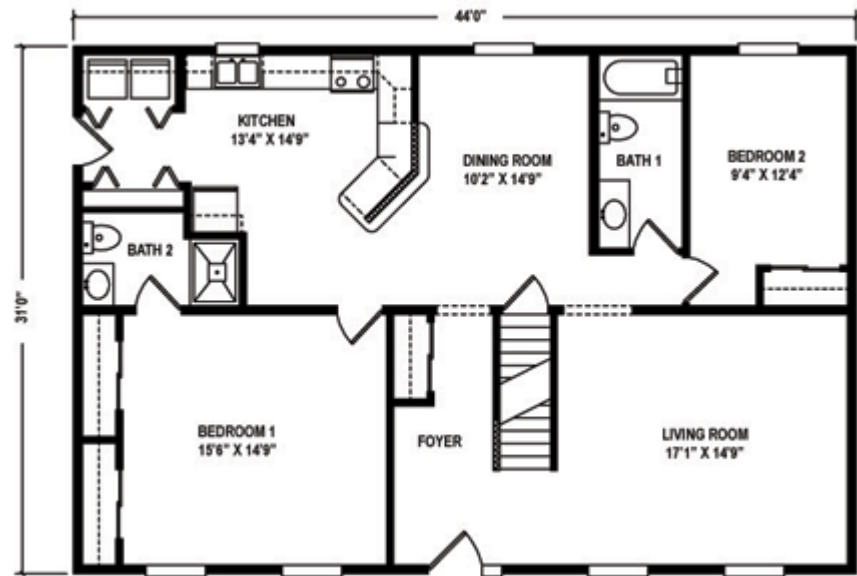
Exceptional living with a master bedroom suite, walk-in closet and grand master bath, open living and dining room, and kitchen creating the perfect home for the family who enjoys open space.



## Highland - Plan 754

1426 Sq. Ft

A cape designed for family living, with many exceptional amenities, such as a large master bedroom suite, a spacious kitchen with a pantry closet, and washer / dryer area. The formal dining and living rooms make this an appealing home to all families.





## Highland - Plan 760

1550 Sq. Ft

Master bedroom with adjoining bath offers seclusion from the living area that features a formal dining room, huge open living room, expansive kitchen that is functional with an adjacent utility room. There is also a second bedroom with it's own bath and walk-in closet, just a few of the features of this dynamic design.

